

# Z-6010

## Compact Omnidirectional Laser Scanner



# Service Guide

## Revision History

Changes to the original manual are listed below:

Version	Date	Description of Version
1.0	Nov. 8, 2010	Initial release
1.1	Aug. 29 2012	Updated scanner parts
1.2	Sep. 14 2012	Updated parts and images
1.3	Oct. 07 2013	Updated front and back case parts
1.4	Sep. 11 2012	Updated button parts

## Preface

### Important Notice

This equipment generates, uses and can radiate radio frequency energy. If not installed and used in accordance with the instructions in this manual, it may cause interference to radio communications. The equipment has been tested and found to comply with the limits for a Class A computing device pursuant to EN55022 and 47 CFR, Part 2 and Part 15 of FCC Rules. These specifications are designed to provide reasonable protection against interference when operated in a commercial environment.

For CE-countries:

It is in conformity with the CE standards. Please note that a CE-Marked power supply unit should be used to conform to these standards.

#### Radio and television interference

Operation of this equipment in a residential area can cause interference to radio or television reception. This can be determined by turning the equipment off and on. The user is encouraged to try to correct the interference by one or more of the following measures:

- Re-orientate the receiving antenna
- Relocate the device with respect to the receiver
- Move the device away from the receiver
- Plug the device into a different outlet so that the device and the receiver are on different branch circuits

If necessary, the user should consult the manufacturer, an authorized dealer or experienced radio/television technician for additional suggestion. The user may find the following booklet prepared by the Federal Communications Commission helpful: **“How to Identify and Resolve Radio-TV Interference Problems”**. This booklet is available from the U.S. Government Printing Office, Washington, DC 20402, Stock No. 004000003454.

No warranty of any kind is made in regard to this material, including, but not limited to, implied warranties of merchantability or fitness for a particular purpose. We are not liable for any errors contained herein nor incidental or consequential damages in connection with furnishing, performance or use of this material.


No part of this document may be reproduced, transmitted, stored in a retrieval system, transcribed, or translated into any language or computer language in any form or by any means electronic, mechanical, magnetic, optical, chemical, manual or otherwise, without express written consent and authorization.

We reserve the right to make changes in product design without reservation and without notification. The material in this guide is for information only and is subject to change without notice.

All trademarks mentioned herein, registered or otherwise, are the properties of their various respective owners.

This manual is in A4 format. Please check your printer setting before printing it out.

## **Table of Contents**

Preface.....	2
Important Notice .....	2
Table of Contents.....	3
Introduction .....	4
Product Overview.....	4
Scanner Parts .....	5
Take Apart .....	6
Before You Start .....	7
 Important Instructions .....	7
Tools to Prepare .....	7

## Introduction

The scanner is a compact hands-free omnidirectional laser scanner, and becomes a single-line laser scanner by pressing down a button. It is designed to suit both requirements for omnidirectional and single-line scanning. With the reserved mounting holes at the back of the scanner body, The scanner transforms to a scanning module to allow integration into your desirable hardware application.

The Scanner is cubic designed as compact as it can be, and with its standard holder, it certainly saves the maximum counter top space. Featured with Z-SCAN+ hardware decode technology, it guarantees the real-time decode and provide the best scanning performance you could expect.

The Scanner surely has the performance inverse to its size.

The scanner includes key features as,

- Button switch in between omnidirectional and single–line scanning capability
- Powerful 20-line scan pattern yields
  - 1400 scans per second for omnidirectional scanning
  - 74 scans per second for single-line scanning
- Implement with the proprietary real-time hardware decoding technology
- Instant working is ready, or can be embedded into other hardware applications via mounting holes at back
- Optional 3D turning cradle with two joins that maximize the range of adjustment

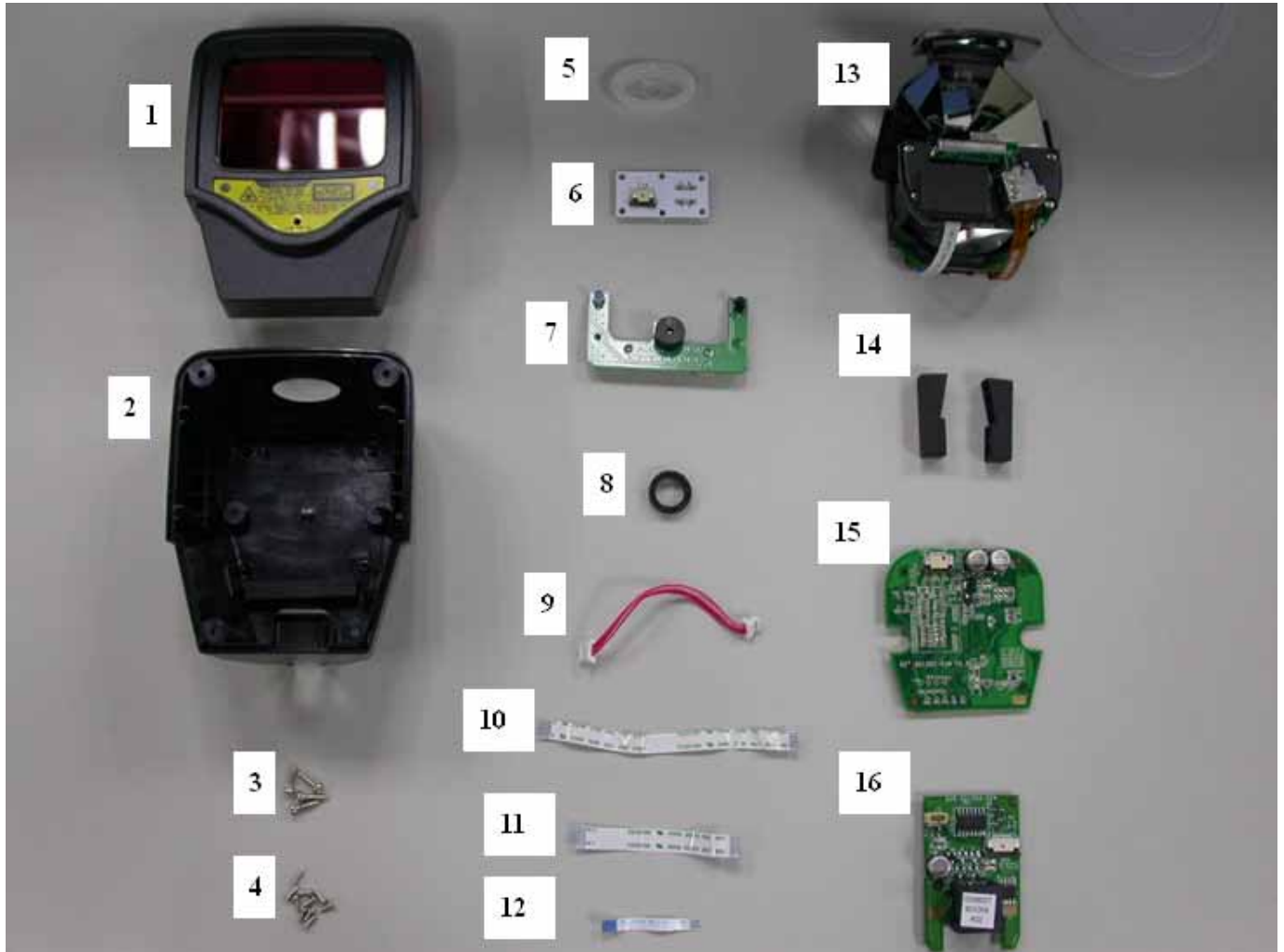
## Product Overview



Description	Function
Exit Window	Reads barcodes
Object Detector	Trigger and wake up scanner when presenting barcode in its range
Beeper Hole	For beep tone indication
Function Button	<p><b>Wake up scanner</b> When the scanner enters into the sleep mode, pressing this switch can wake the scanner up. The sleep mode feature can be programmed using the menu labels from the Programming Guide. NOTE: The default time-out value is set to 10 minutes after laser slept, 30 minutes after motor slept. When the scanner is in sleep mode, the LED is intermittently flashing Blue.</p> <p><b>Single -line pattern</b> Pick up the scanner, press and release the trigger will active single line scan mode</p>
Back Mount Holes	To fix the scanner with your host instrument.
Interface Cable Connection	For interface communication cable connection

## Scanner Parts

The scanner includes the following parts:



Images are for representation purposes only. Actual parts may differ due to production batch.

17 Blank logo



18 ZEBEX logo



NO.	P/N	Name	Quantity
1	864-601000-205	Front case assembly (black)	Select 1
	864-601000-204	Front case assembly	
2	864-601000-307	Back case assembly (black)	Select 1
	864-601000-306	Back case assembly	
3	521-003000-8R0	Self-tapping screw,M2-8.0mm,round, Philips head	4
4	521-202000-4R0	Self-tapping M1.6-4.0mm flat,Philips head	10
5	601-060100-143	Rubber button	1
6	616-601002-202	LED board assembly	1
7	616-601003-202	IR & buzzer assembly	1
8	603-860100-191	Sealing rubber	1
9	160-204100-060	4Pin Pitch 1.0mm, Wire to board cable	1
10	031-208010-420	10 pin FFC cable	1
11	031-005012-520	12 pin FFC cable	1
12	031-203006-421	6 pin FFC cable	1
13	863-306002-502	Engine assembly	1
14	602-660100-351	Shock absorbing rubber (20.0*15.0*6.0)	1
	602-660100-371	Shock absorbing rubber (36.0*4.0*2.0)	1
15	616-601001-205	Main board assembly	1
16	616-601004-202	Phone jack assembly	1
17	510-300001-411	Blank logo	
18	510-300001-081	ZEBEX logo	

## Take Apart Before You Start

### Important Instructions

- Read these instructions completely before you begin.
- Follow all instructions.
- Heed all warnings.

### Tools to Prepare

- Philips screwdriver.

Please follow these steps to take apart Z-6010.

1. Remove the screws from the back case as pointed in red arrows.



2. Remove the front case of the scanner then carefully remove the wire to board cable.

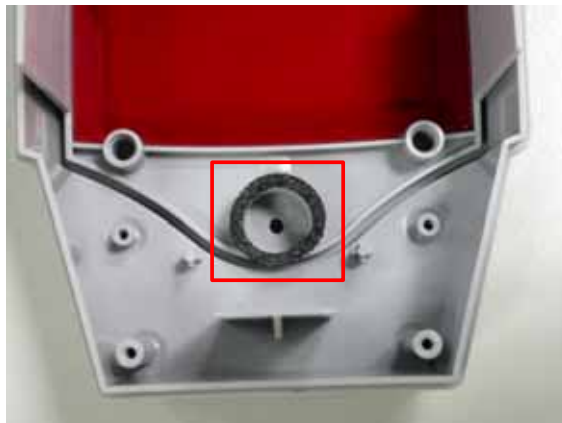


**Note:** Wrap the wire to board cable around the cylinder when assembling the scanner.

3. Remove the screws pointed in red arrows and remove the buzzer & IR PCBA.



4. Remove the rubber seal shown in red square.

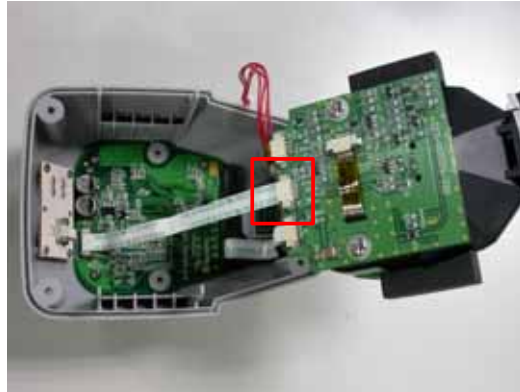


5. Remove the dust covers as pointed in red arrows. Be careful not to stain the dust covers.



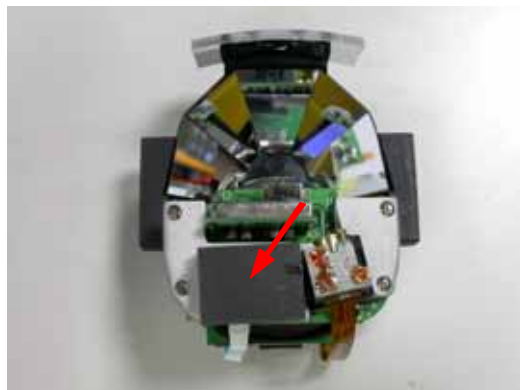


6. Remove the FFC cable shown in red square from the main board then remove the scan engine.



**Note:** Make sure the connectors are tightly connected and the cable is facing the right direction when assembling the scanner.

7. Remove the shock absorbing rubber as pointed in red arrow.



8. Remove the shock absorbing rubber as pointed in red arrow.



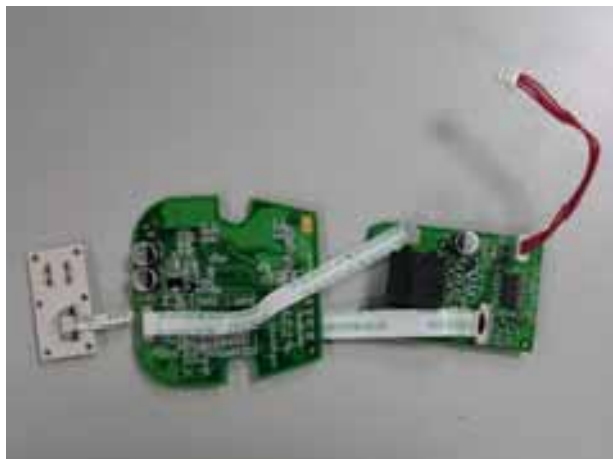
9. Remove the screws from the LED board as pointed in red arrows.



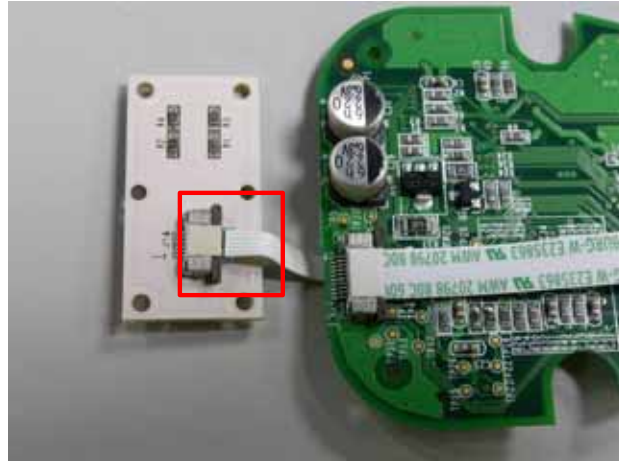
10. Remove the screws from the main board as pointed in red arrows.



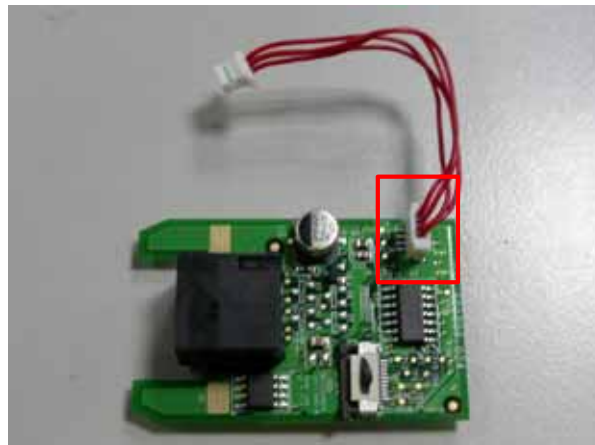
11. Take out the main board, the LED board, and the phone jack board from the back case.



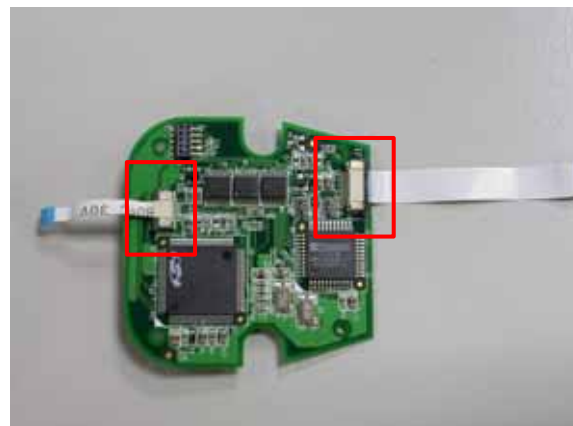
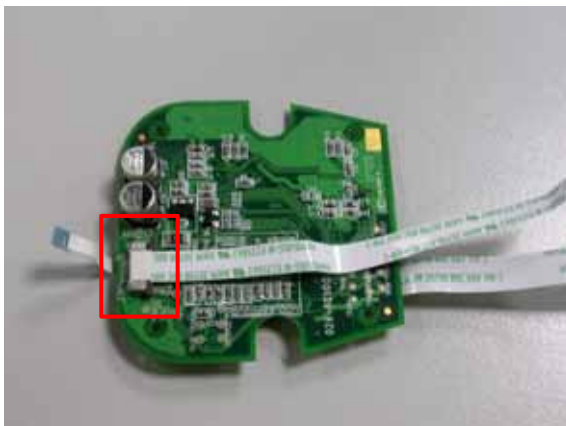
12. Remove the FFC cable from the LED board.



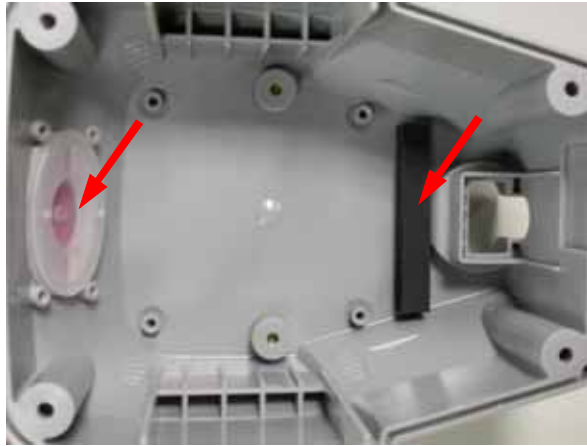
13. Remove the wire to board cable from the phone jack board.



14. Remove the FFC cable from the main board.



15. Remove the rubber button and the shock absorbing rubber from the back case as pointed in red arrows.



**Note:** To assemble the scanner, start from the last step and work your way backwards and go over every step slowly.