



Software Manual
BIXOLON Profile Manager
Android/Windows

Ver. 1.03

<http://www.bixonlon.com>

Table of Contents

1. Manual Information.....	3
2. Operating Environment.....	3
2-1 Operating System.....	3
2-2 Interface.....	3
2-3 Printer Support.....	3
3. Useful Function.....	4
3-1 XPM Server Setting	4
3-2 Add Printer.....	6
3-3 Connect Printer to XPM Server.....	7
3-4 Delete Printer.....	9
4. Other Functions	12
4-1 Android Permission Setting.....	12
4-2 Android Bluetooth Connection	13
4-3 Android Wi-Fi Connection.....	15

1. Manual Information

This manual describes information for using the Bixelon Connection Manager (XCM).

- Bixelon Profile Manager(XPM)
A solution that allows remote printer status checking and management
- Bixelon Connection Manager(XCM)
An agent app that can connect a printer that is not directly connected to XPM to XPM.

2. Operating Environment

2-1 Operating System

- Android OS V6.0 and later
- Windows VISTA and later

2-2 Interface

- Android support: Bluetooth, Wi-Fi, USB
- Windows support: Bluetooth, Wi-Fi, USB, Serial

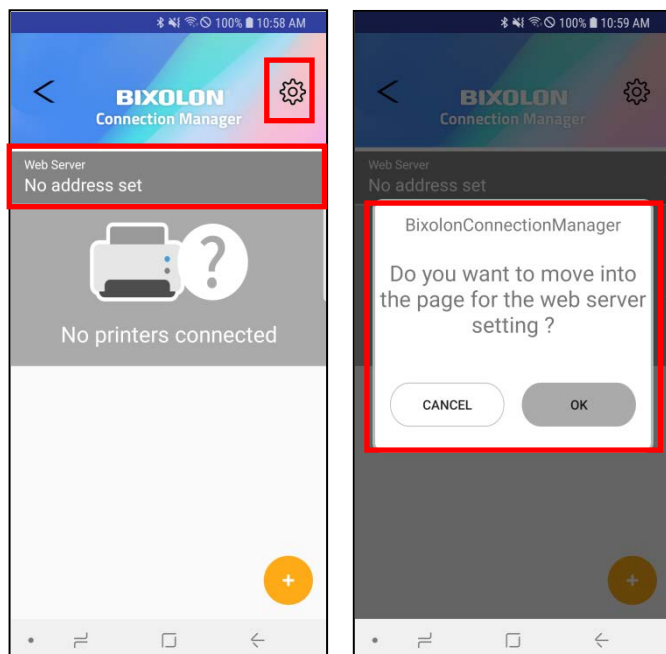
2-3 Printer Support

- Label Printer
 - SLP-DX420 / SLP-DX423
 - SLP-DX220 / SLP-DX223
 - SLP-TX400 / SLP-TX403
 - SLP-TX420 / SLP-TX423
 - SLP-TX220 / SLP-TX223
 - SLP-DL410 / SLP-DL413
 - XT5-40 / XT5-43 / XT5-46
 - XD5-40d / XD5-43d
 - XQ-840(Android only)
- Mobile Printer
 - SPP-L3000
 - SPP-R200III, SPP-R310, SPP-R410
- POSPrinter
 - SRP-Q300 / SRP-Q302
 - SRP-S300
 - SRP-380 / SRP-382
 - SRP-F310II / SRP-F312II
 - SRP-350plusIII / SRP-352plusIII
- B-gate
 - BGT-100P / BGT-102P
 - SRP-Q300H / SRP-Q302H
 - SRP-S300H
 - SRP-F310IIH / SRP-F312IIH

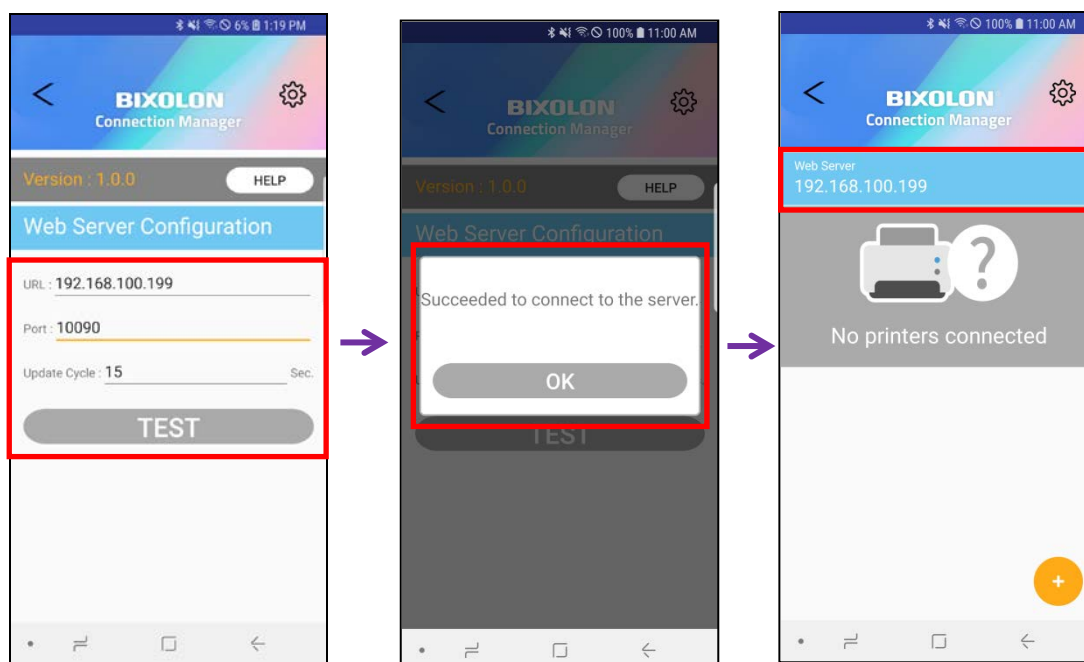
3. Useful Function

3-1 XPM Server Setting

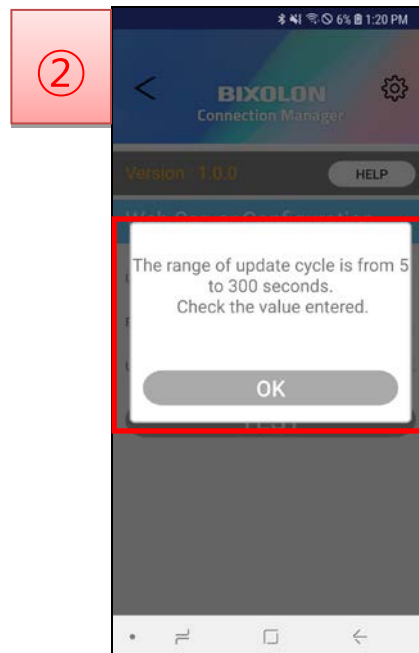
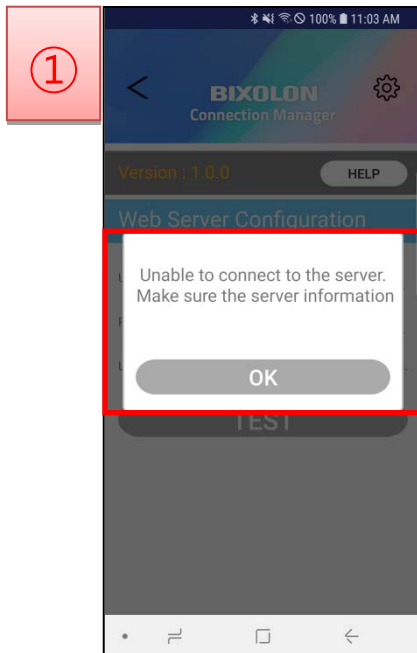
- Go to the screen for XPM server settings.
 - Click the setting button on the upper right of the main screen or the "No printers connected" screen, and move to the server setting screen through the popup window.



- Set the server's URL (IP address), port number, and update cycle (status checking cycle).
 - Update cycle: 5 ~ 300 sec (15 seconds default)
- You can check the connection status of the server you have set up by clicking the "TEST" button.
- The server information you set is displayed on the main screen.

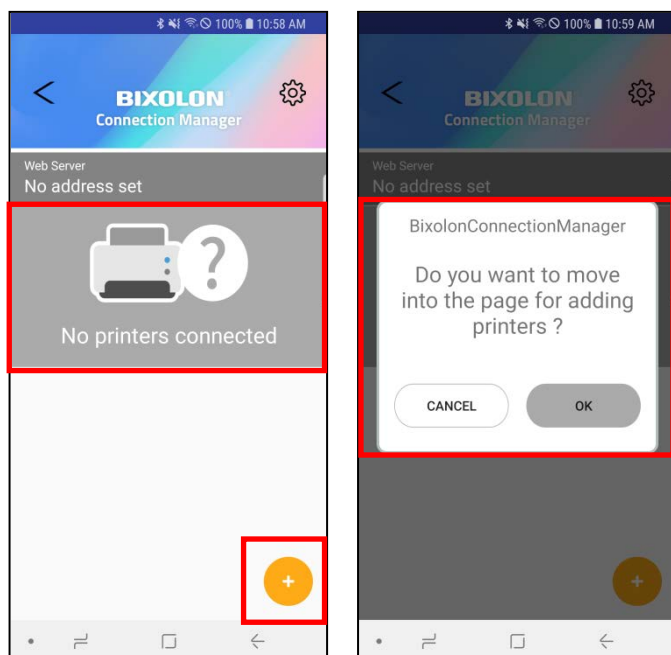


- If the connection to the server is not successful, an error pop-up window will appear as shown in [Screen ①].
- If the cycle of the update cycle is not valid, an error pop-up window will appear as shown in [Screen ②].

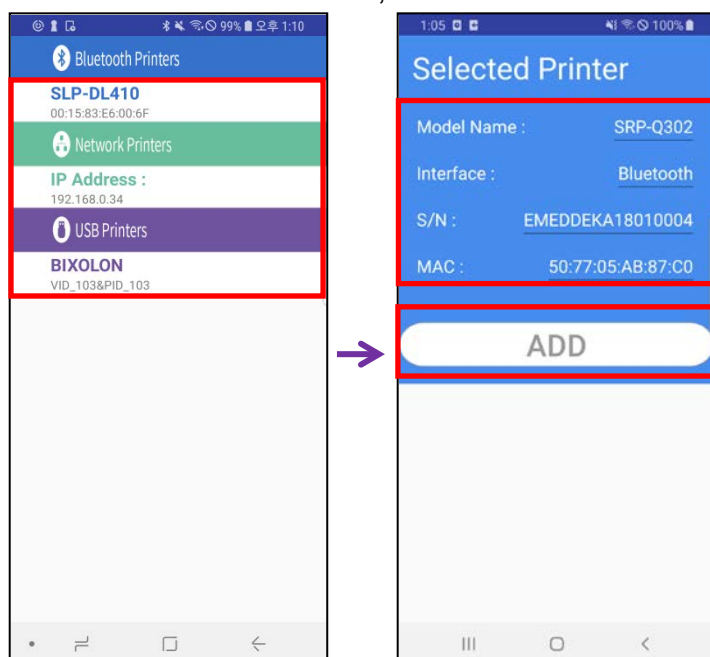


3-2 Add Printer

- Go to the "Add Printer" screen to register the printer on the XPM server.
 - Click the "+" button on the bottom right of the main screen or the "No printers connected" screen, and move into "Add Printer" screen through a pop-up window.

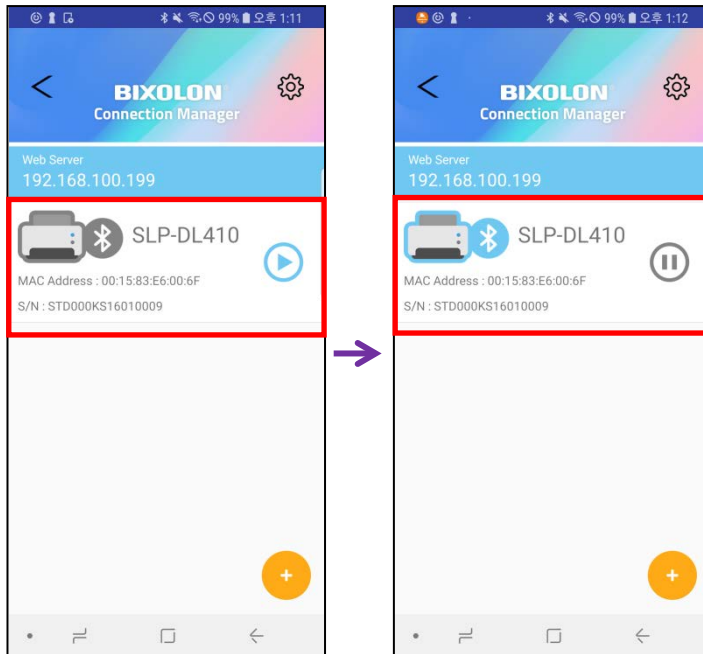


- It searches for a list of connectable printers and displays them on the screen.
 - Common support: Bluetooth, Wi-Fi, USB
 - Windows support: Serial
- Select the printer to add and select the emulation type for the printer.
 - The label and mobile type is supported in the current version
- It reads the model name, serial number, MAC address information from the printer and displays them on the screen.
 - If all information is normal, click the "ADD" button to complete printer adding.

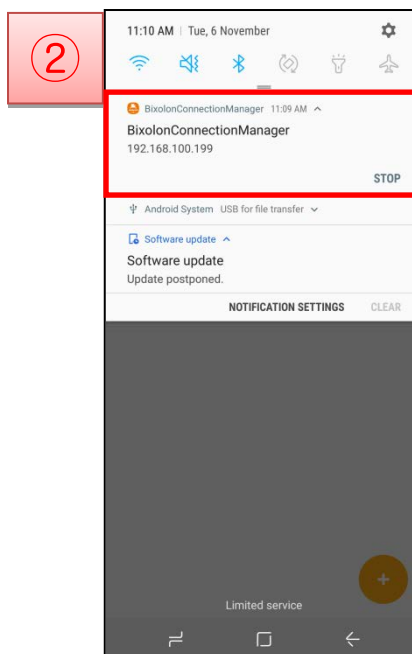
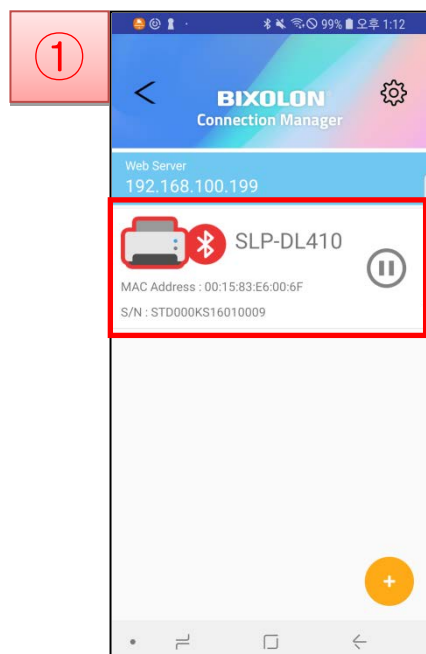


3-3 Connect Printer to XPM Server

- When the information of the added printer is displayed on the main screen, press the play button to proceed with registration to the XPM server.
- If the printer is registered properly in the XPM server, the play button will change to the pause button and the icon will change according to the current printer status.



- If the printer indicates an error, the printer icon changes as shown in [Screen ①].
- If the printer is normally registered in the XPM server, XCM is registered as a service and it is displayed in the notification window as [Screen ②]
 - If you click the "STOP" button in the notification window, the service is terminated and XPM connection is canceled.
 - The XCM service is only supported on Android.

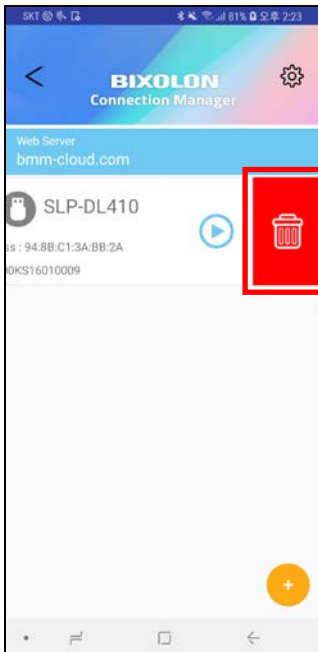


Icon changes according to printer and server connection status	
Printer connected normally	
Printer in error	
Printer disconnected	
XPM server connected	
XPM server disconnected	

3-4 Delete Printer

<Android>

- Swipe left on the printer to be deleted.
- Click the Delete icon to remove the printer.



<Windows>

- Right-click on the printer to be deleted and the "Remove" button will appear. Click the 'Remove' button to delete the printer.

3-5 Print

To print while the XCM is running, network communication to the host device on which the program is running.

Send the print data to port TCP 9100 at the IP address of the device where XCM is running.

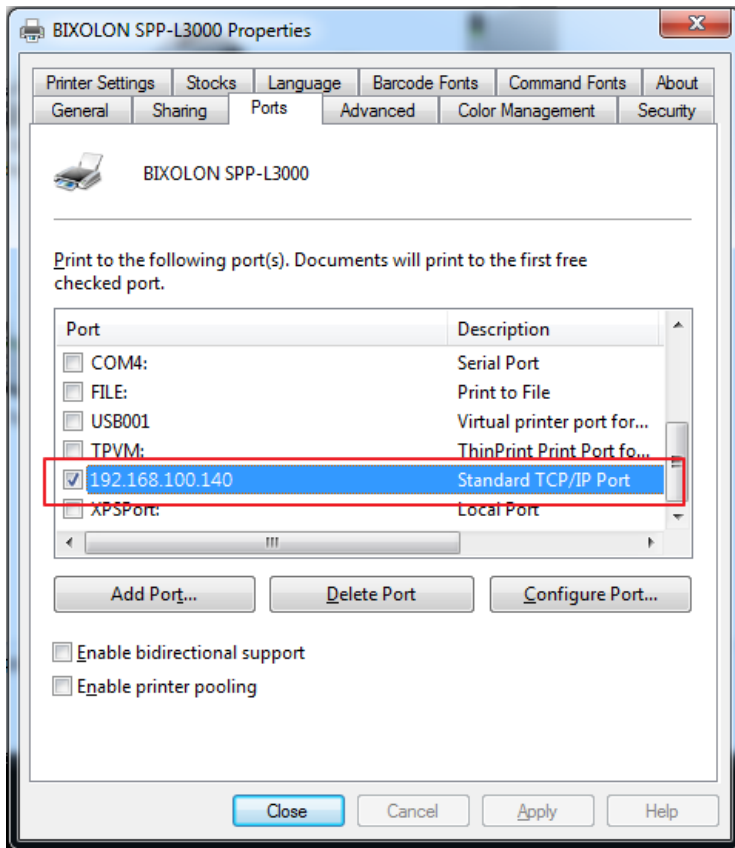
e.g.1) Android Sample App

- If the IP address of the device running XCM is 192.168.0.23, enter the IP after selecting the network in the sample app.

The screenshot shows the 'Port Type' selection screen of an Android application. At the top, there is a status bar with icons for settings, Bluetooth, Wi-Fi, and battery level (100%), along with the time '오전 9:52'. Below the status bar, the 'Port Type' section has four radio button options: 'Bluetooth', 'Network' (which is selected and highlighted with a red box), 'USB', and 'BluetoothLowEnergy'. Below this, the 'Printer Model' is set to 'SPP-R210'. A large text input field contains the IP address '192.168.0.26'. Below the input field, there is a red box around the 'IP Address : 192.168.0.23:9100' text. Underneath, the 'Async Mode' checkbox is checked. At the bottom, there is a grey button labeled 'PRINTER OPEN'. The very bottom of the screen shows standard Android navigation icons: a home button, a square task manager button, and a back arrow button.

e.g.2) Windows Driver

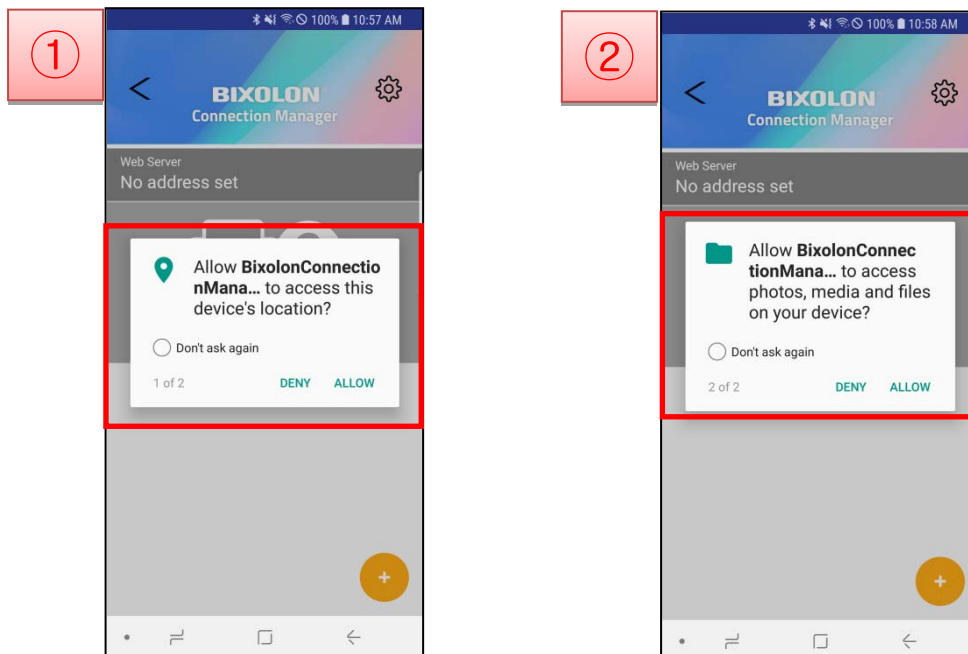
- If the IP address of the device running XCM is 192.168.100.140, select the appropriate IP from the driver port.



4. Other Functions

4-1 Android Permission Setting

- When executing XCM initially, request permission for Coarse location and file access as shown below.



Coarse location permissions: Allows network communication

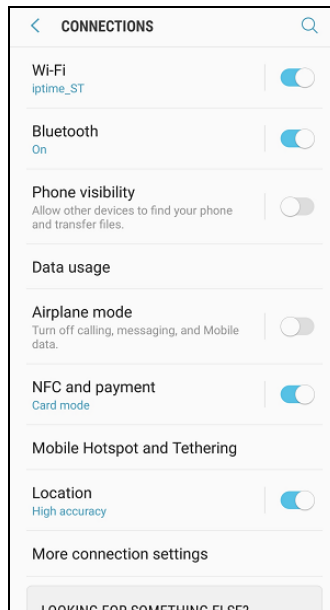
File access permissions: Allows local DB access

**Note**

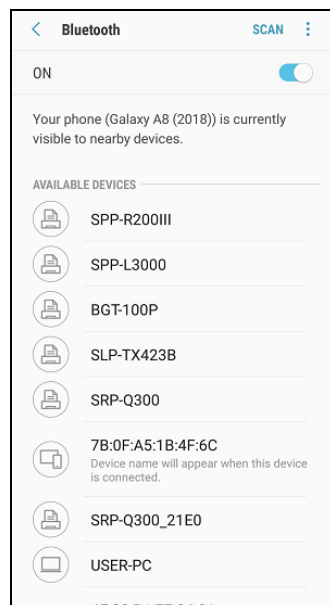
- This permission is only valid for Android.
- XCM may not work properly if the permission is rejected.

4-2 Android Bluetooth Connection

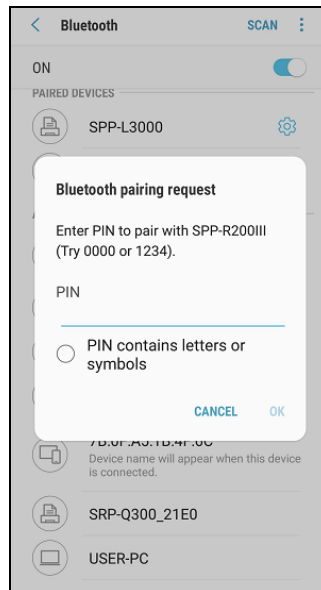
- 1) Turn on the printer power.
- 2) Select [Settings] - [Bluetooth].



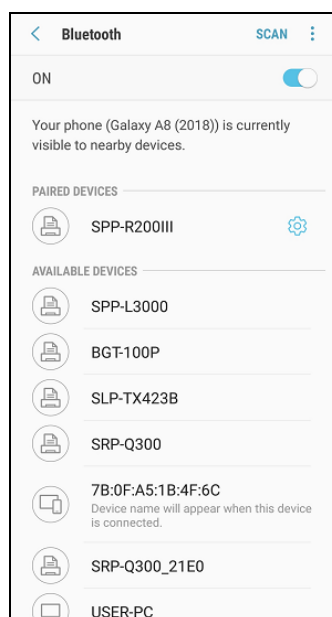
- 3) If you change from 'off' to 'on', then you can find available device list for Bluetooth connection. Select a device you want to connect on the list.



4) If you find the below screen, please input password and click 'Join'. Password is 0000.

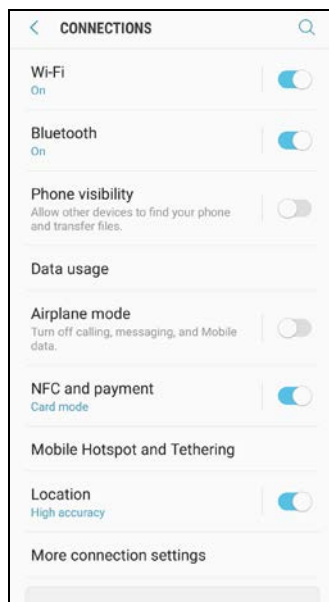


5) If you find a device you want to connect on the 'Paired Devices', then the connection is well done.

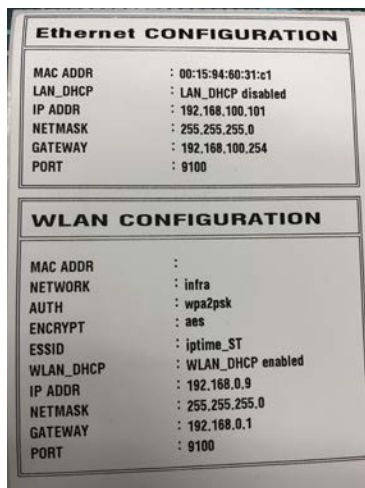


4-3 Android Wi-Fi Connection

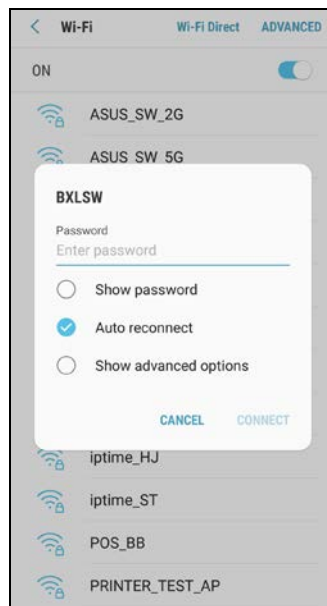
- 1) Turn on the printer power.
- 2) Select [Settings] - [Wi-Fi]



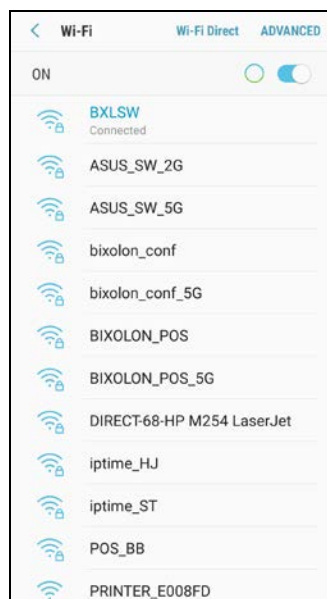
- 3) Network information of the printer can be checked. Corresponding information is referred to [WLAN Configuration] – [ESSID] after conducting Self-test.
To conduct Self-Test, press Power and Feed buttons simultaneously after turning the printer off.



4) Connect to Network of the AP which is connected to the printer.



5) If the network shows "Connected", the connection is complete.



Copyright

© BIXOLON Co., Ltd. All rights reserved.

This user manual and all property of the product are protected under copyright law. It is strictly prohibited to copy, store, and transmit the whole or any part of the manual and any property of the product without the prior written approval of BIXOLON Co., Ltd. The information contained herein is designed only for use with this BIXOLON product. BIXOLON is not responsible for any direct or indirect damages, arising from or related to use of this information.

- The BIXOLON logo is the registered trademark of BIXOLON Co., Ltd.
- All other brand or product names are trademarks of their respective companies or organizations.

BIXOLON Co., Ltd. maintains ongoing efforts to enhance and upgrade the functions and quality of all our products.

In the following, product specifications and/or user manual content may be changed without prior notice.

Caution

Some semiconductor devices are easily damaged by static electricity. You should turn the printer "OFF", before you connect or remove the cables on the rear side, in order to guard the printer against the static electricity. If the printer is damaged by the static electricity, you should turn the printer "OFF".

Revision history

[illegible]