



# **Software Manual**

## **mPrint**

### **Android**

---

**Rev. 1.00**

# Table of Contents

<b>1. Manual Information.....</b>	<b>3</b>
<b>2. Operating Environment.....</b>	<b>3</b>
2-1 Operating System.....	3
2-2 Interface.....	3
2-3 Printer Support.....	3
<b>3. Useful Function.....</b>	<b>4</b>
3-1 Image.....	5
3-2 PDF .....	5
3-3 Preview .....	6
3-4 Share .....	9
3-5 Print .....	10
3-6 Settings.....	11
<b>4. The others Function .....</b>	<b>17</b>
4-1 Bluetooth Connection .....	17
4-2 Wi-Fi Connection .....	19

# 1. Manual Information

This manual is to provide users with the necessary information to make good use of the mPrint function in an Android environment.

## 2. Operating Environment

### 2-1 Operating System

- Android OS V4.1 and later

### 2-2 Interface

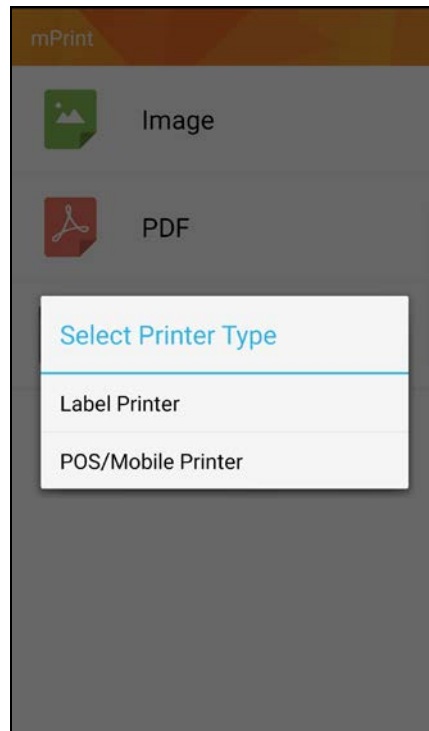
- Bluetooth, Wi-Fi

### 2-3 Printer Support

- POS/Mobile, Label Printer (Not Supported B-gate)

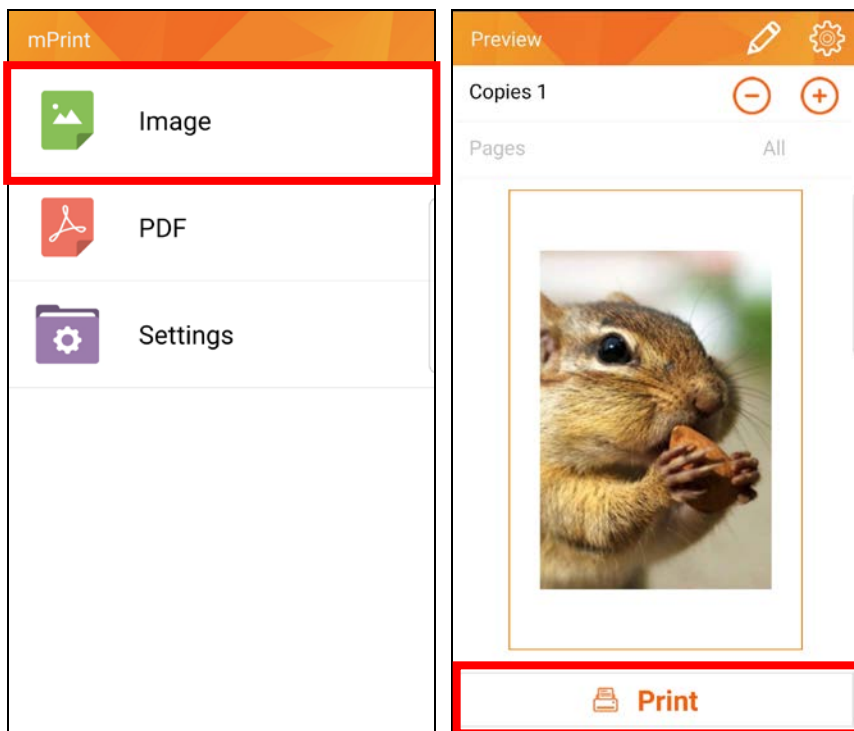
### **3. Useful Function**

To select the proper type of printer when running the mPrint for the first time



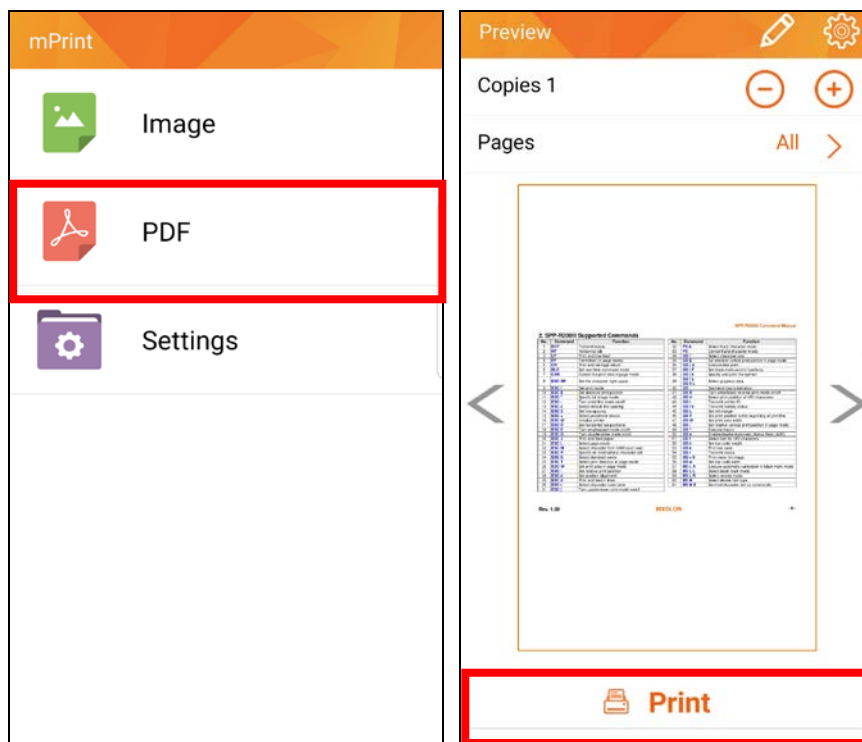
## 3-1 Image

- To print images stored in the SD card.



## 3-2 PDF

- To print PDF files stored in the SD card.



### 3-3 Preview

- You may set the number of copies, select the pages to print and edit the image under the Preview menu. [Settings] – [Preview] option should be set as “used”.

#### 1) Copies

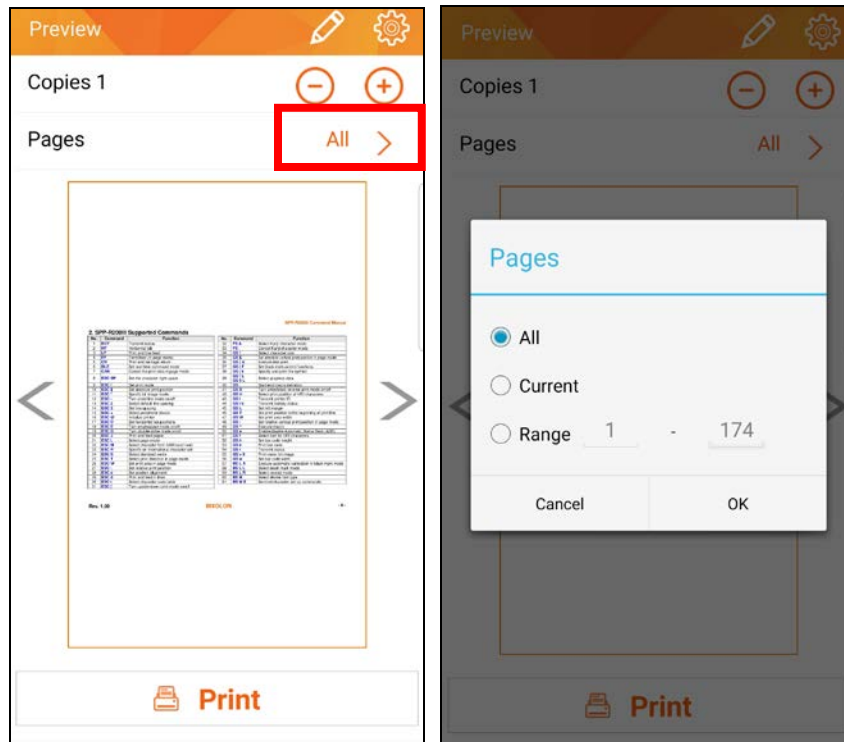
Set the number of copies by using (+) and (–) buttons.



### 2) Pages

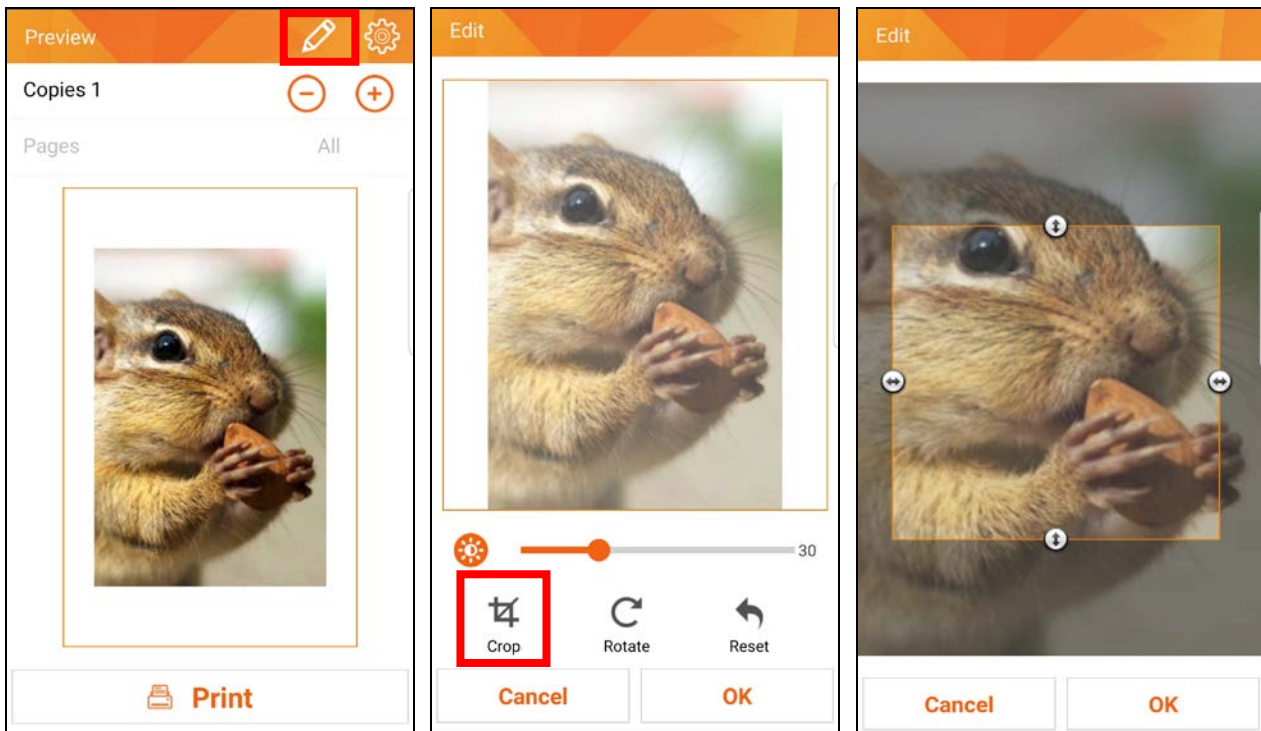
Select the pages to print.

When it consists of 2 or more pages you may select an option among all, current and range of pages.



### 3) Edit

Edit the image's brightness, rotate and/or crop the image.



#### (1) Brightness

To set the brightness of the image

#### (2) Crop

To crop the image into a desired size.

#### (3) Rotate

To rotate the image.

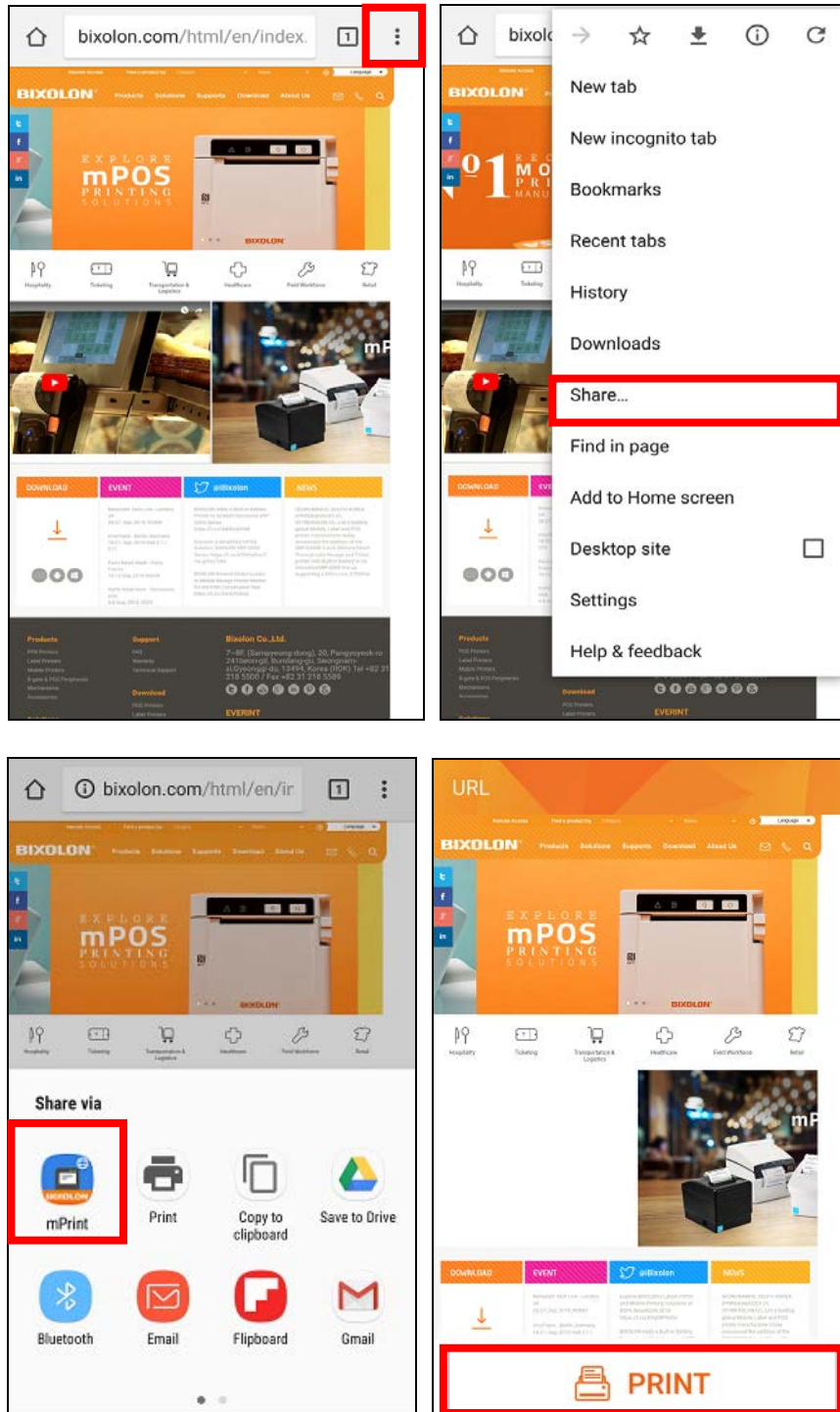
#### (4) Reset

To reset the image to its original configuration.



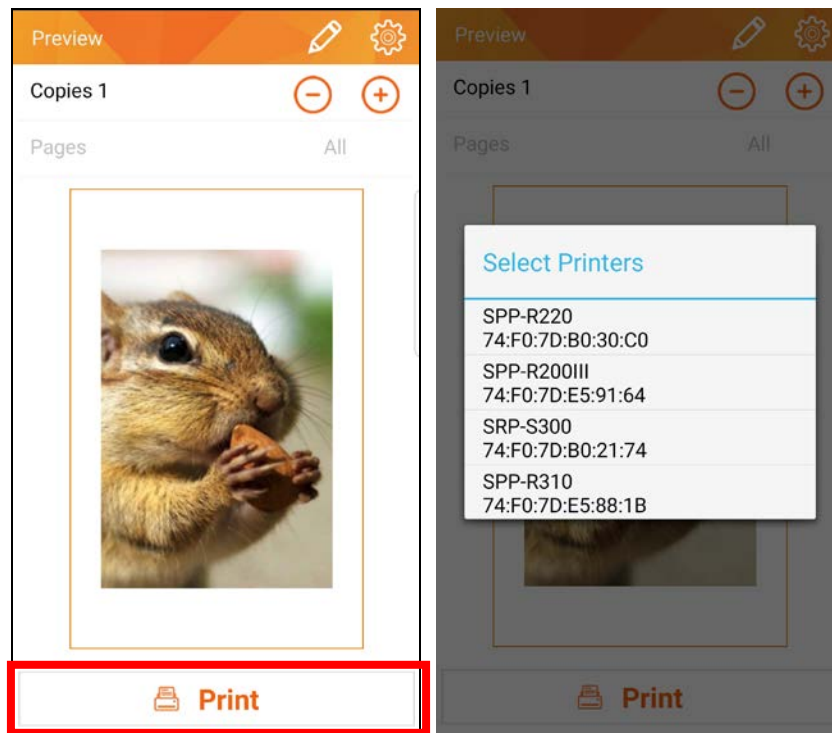
## 3-4 Share

- To transfer printing data to the mPrint on any web-browsers or applications that support sharing function The transferrable printing data should be formatted in an image, PDF or web-page



### 3-5 Print

- Searching connected printers and print through the selected printer by user.  
If the [Settings] - [Select Printer Type] is set automatic, printer selecting step will be skipped.

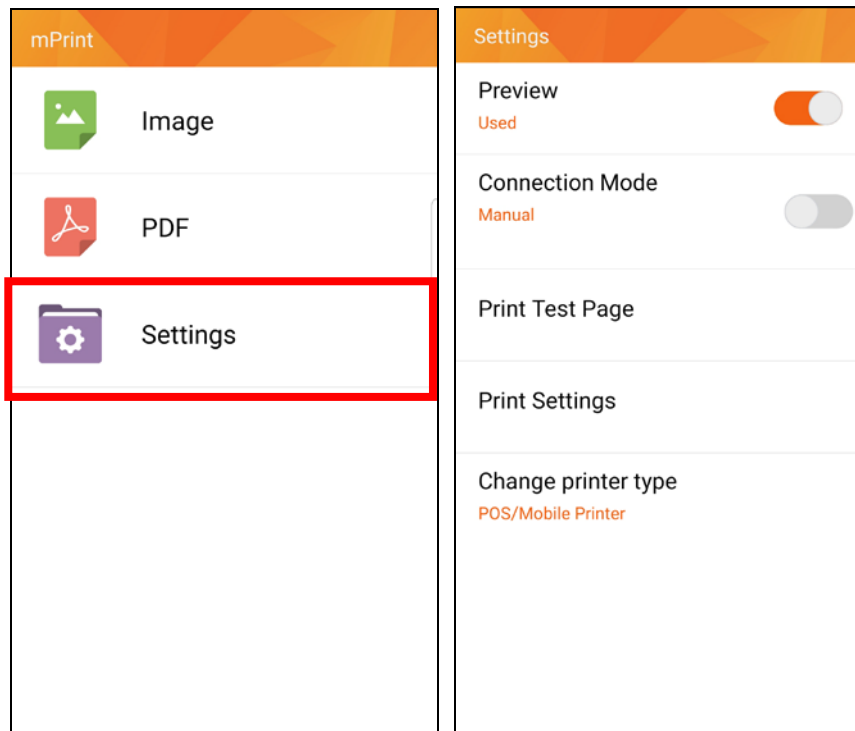


When the connection with the selected printer is established successfully, a “printing” message will appear and it will automatically return to the main screen when the print-job is complete.

## 3-6 Settings

- To set the options for printing

When the Preview function is used the same settings can be done at the preview screen.



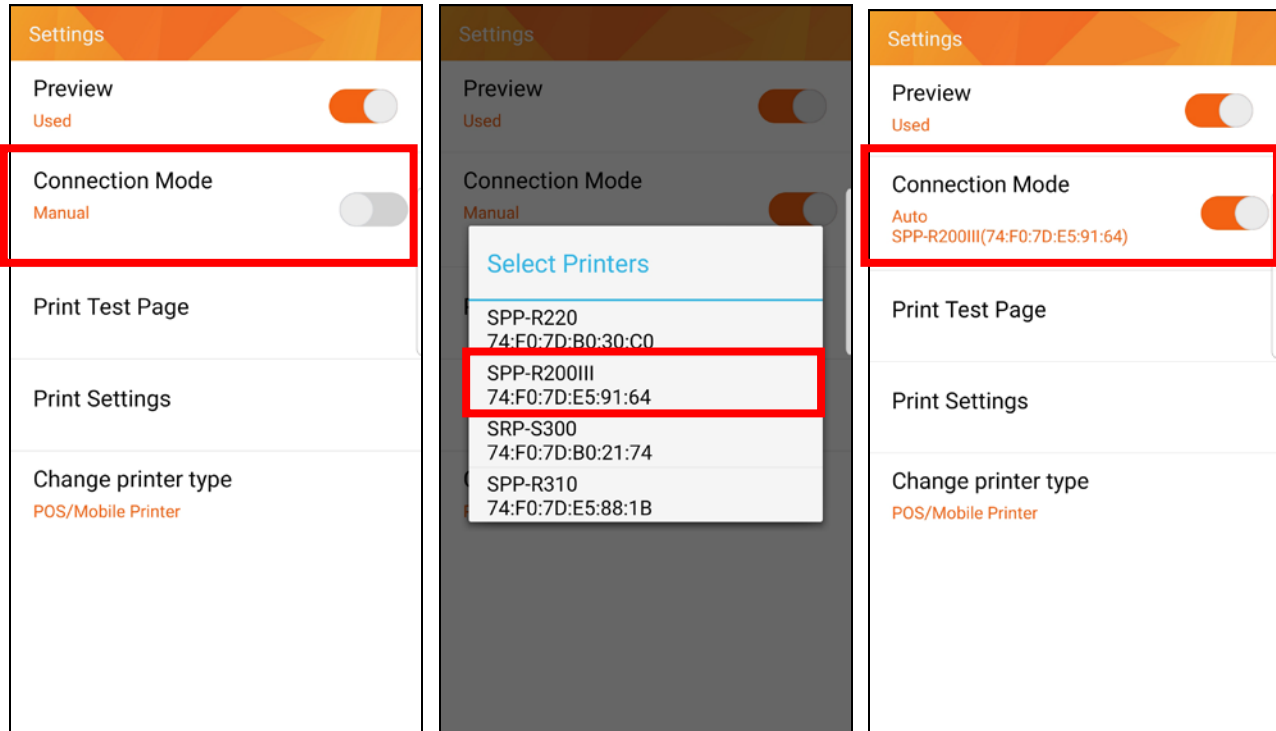
### 1) Preview

To determine whether the preview page will appear before printing.  
Should be set as “used” to enable a preview and image editing functions.

## 2) Connection Mode

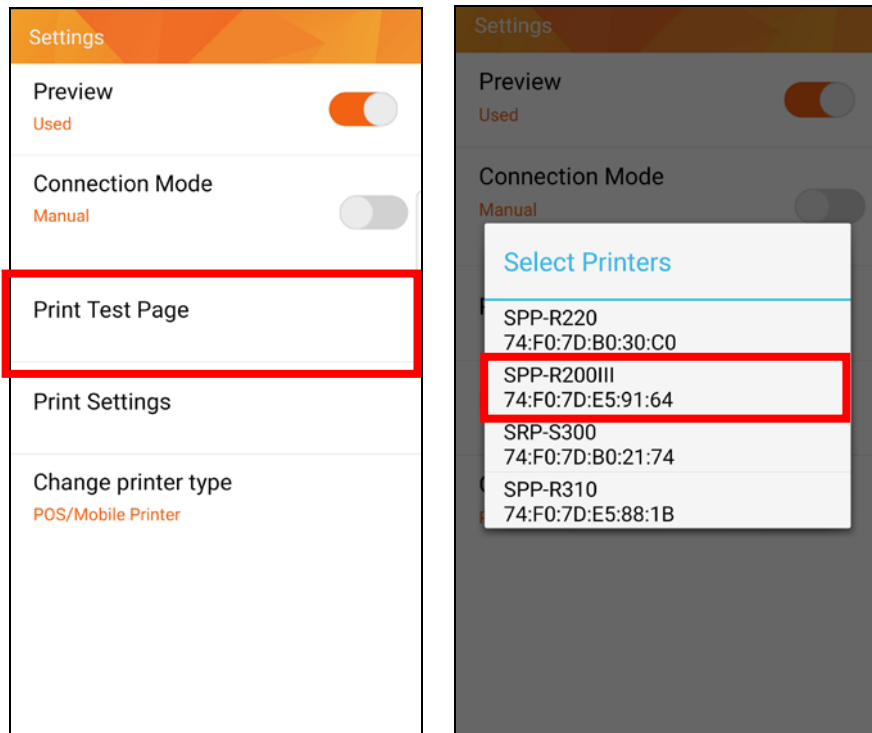
For printing an image, PDF file or web-page

- Manual: Searching connected printers and enable the user to select.
- Auto: Connecting with the pre-set printer automatically and printing when the connection is established successfully.



## 3) Print Test Page

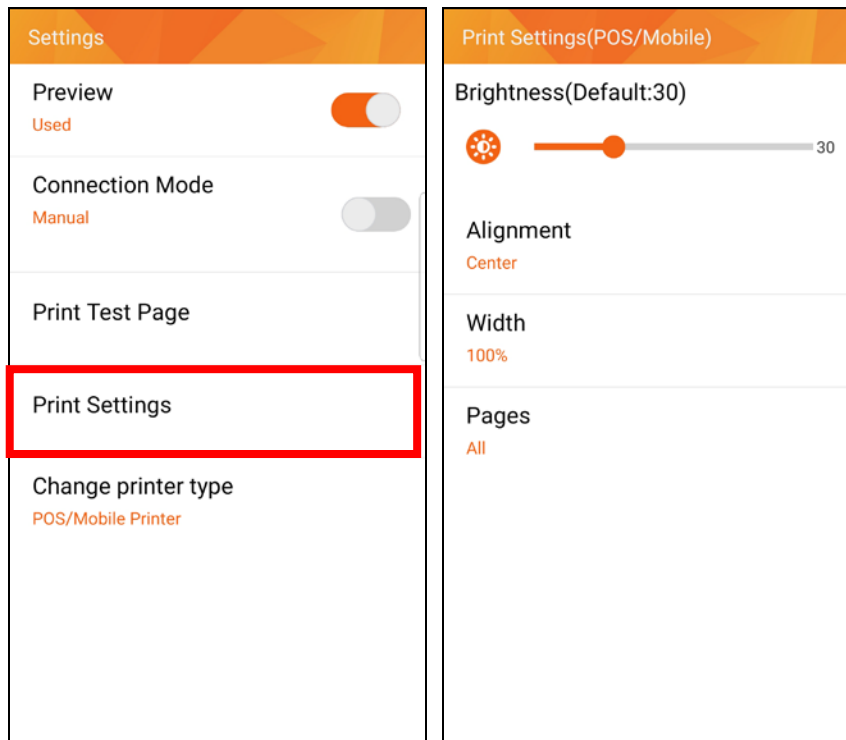
To make a test print on the selected printer



### 4) Print Settings

The available options may differ by the related printer type.

- POS/Mobile printer



#### (1) Brightness

To set the brightness of the image

#### (2) Alignment

To select on which side the image should be aligned

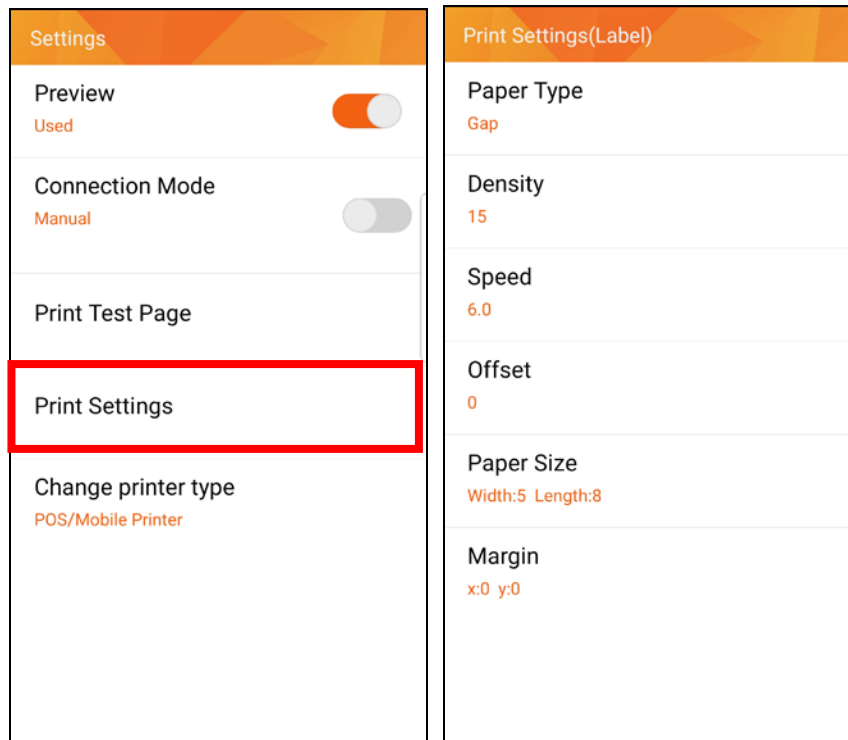
#### (3) Width

To scale the image

#### (4) Pages

To select the pages to print

### - Label printer



(1) Paper Type

To select which type of paper is used

(2) Density

To set the density of printing

(3) Speed

To set the speed of printing

(4) Offset

To set the distance between a Black Mark (or Gap) and the cutting line

(5) Paper Size

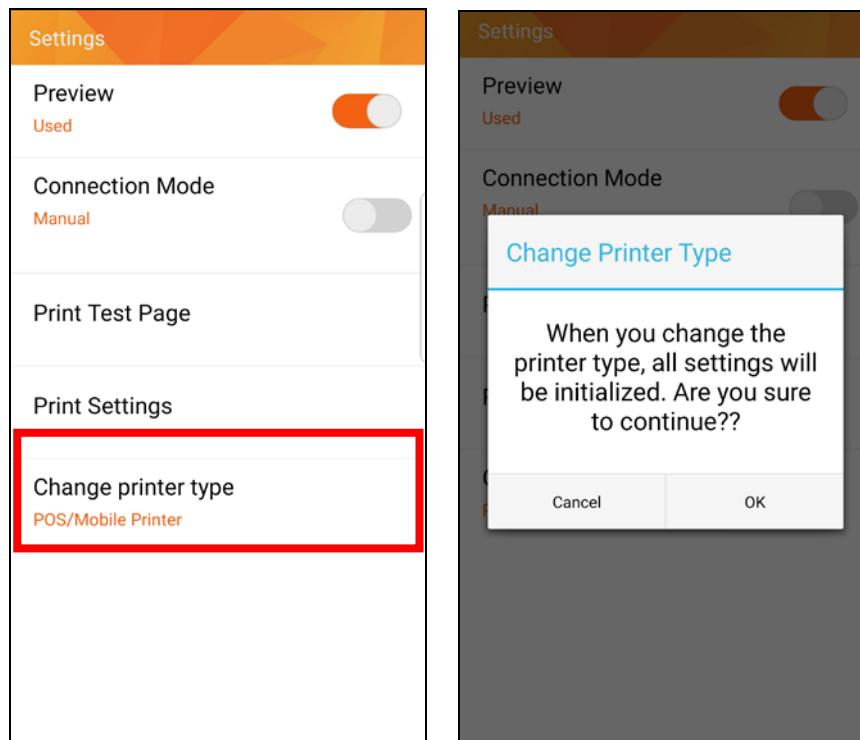
To set the width and length of the paper

(6) Margin

To set the margin

### 5) Change printer type

printer type set in the mPrint app is changed (POS / mobile, label printer).  
In this case, the previously setting values are initialized then, the app returns to the main screen.

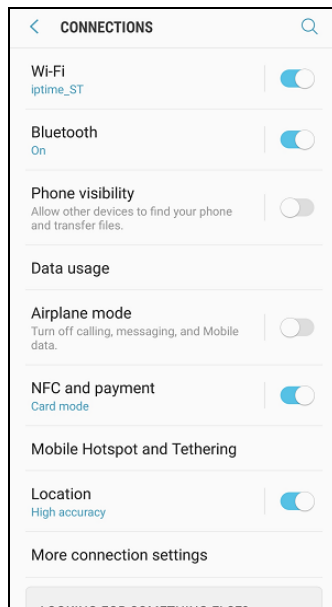




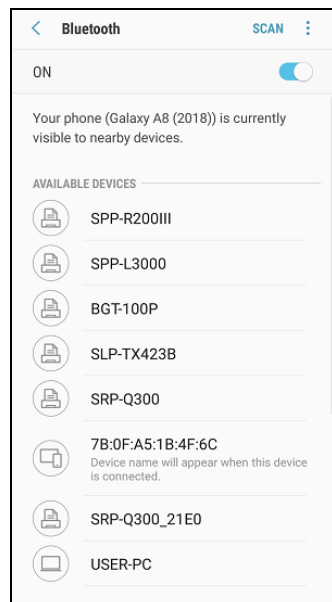
## 4. The others Function

### 4-1 Bluetooth Connection

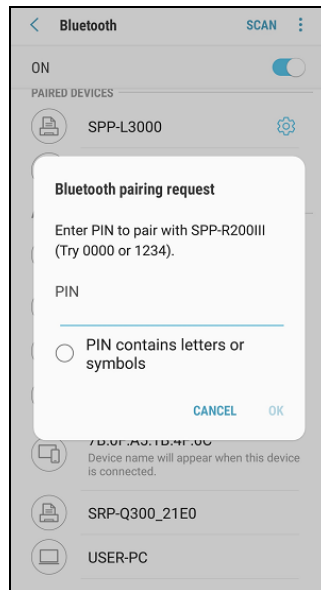
- 1) Turn on the printer power.
- 2) Select [Settings] - [Bluetooth].



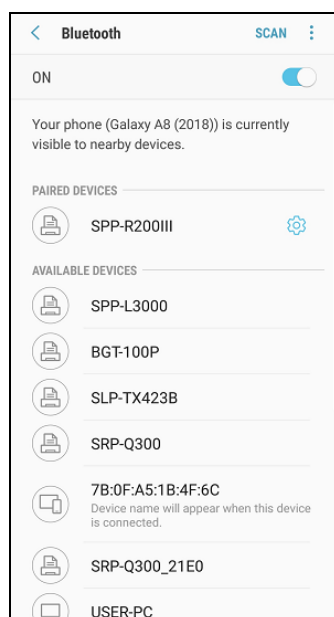
- 3) If you change from 'off' to 'on', then you can find available device list for Bluetooth connection. Select a device you want to connect on the list.



4) If you find the below screen, please input password and click 'Join'. Password is 0000.

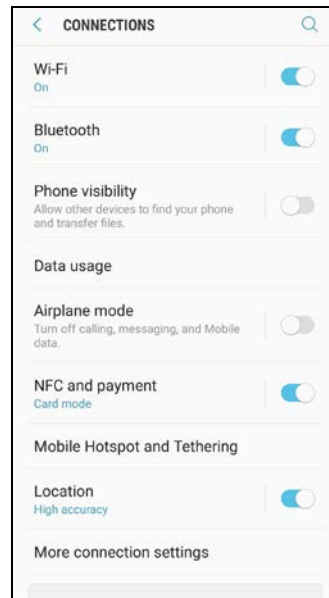


5) If you find a device you want to connect on the 'Paired Devices', then the connection is well done.



## 4-2 Wi-Fi Connection

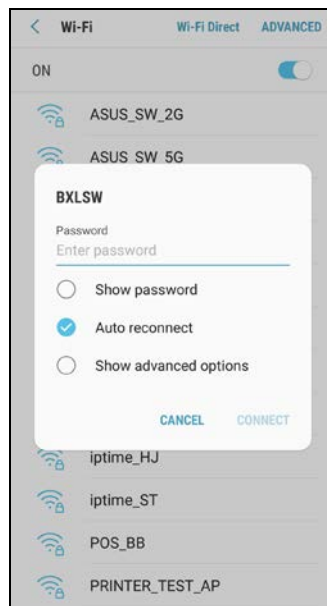
- 1) Turn on the printer power.
- 2) Select [Settings] - [Wi-Fi]



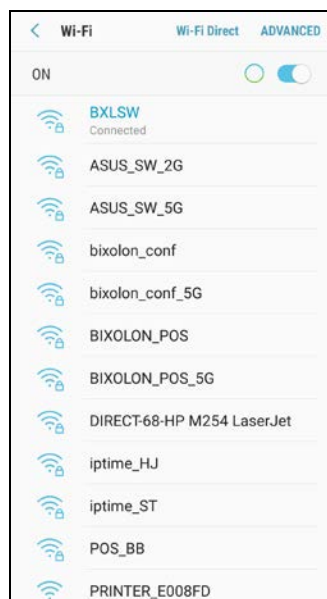
- 3) Network information of the printer can be checked. Corresponding information is referred to [RF Interface] – [ESSID] after conducting Selftest.  
If Network mode is not configured to "INFRASTRUCTURE" appropriately, refer to BIXOLON Net Configuration Tool manual to set it up.  
To conduct Self-Test, press Power and Feed buttons simultaneously after turning the printer off.



4) Connect to Network of the AP which is connected to the printer.



5) If the network shows "Connected", the connection is complete.



### **Copyright**

© BIXOLON Co., Ltd. All rights reserved.

This user manual and all property of the product are protected under copyright law. It is strictly prohibited to copy, store, and transmit the whole or any part of the manual and any property of the product without the prior written approval of BIXOLON Co., Ltd. The information contained herein is designed only for use with this BIXOLON product. BIXOLON is not responsible for any direct or indirect damages, arising from or related to use of this information.

- The BIXOLON logo is the registered trademark of BIXOLON Co., Ltd.
- All other brand or product names are trademarks of their respective companies or organizations.

BIXOLON Co., Ltd. maintains ongoing efforts to enhance and upgrade the functions and quality of all our products.

In the following, product specifications and/or user manual content may be changed without prior notice.

### **Caution**

Some semiconductor devices are easily damaged by static electricity. You should turn the printer "OFF", before you connect or remove the cables on the rear side, in order to guard the printer against the static electricity. If the printer is damaged by the static electricity, you should turn the printer "OFF".

## Revision history

[illegible]