

# **CITIZEN**

## **Windows Graphic Loader for Label Printers**

### **User's Manual**

**Version 1.0.5.0**

**CITIZEN SYSTEMS JAPAN CO., LTD.**

## Copyrights

CITIZEN is a registered trademark of Citizen Watch Co., Ltd.

Windows® is a registered trade mark of Microsoft Corporation.

All other trademarks are the property of their respective owners.

Specifications subject to change without notice.

Copyright © 2019, CITIZEN SYSTEMS JAPAN CO., LTD. All rights reserved.

## Revision History

Date	Version	Note
Aug 23, 2017	1.0.0.0	First publication
Sep 25, 2017	1.0.1.0	<ul style="list-style-type: none"><li>- Deleted a restriction on the USB 2.0 High-Speed communication.</li><li>- Updated screenshot images.</li></ul>
Jan 24, 2018	1.0.2.0	Increased the version number with the release of 1.0.2.0
Aug 31, 2018	1.0.3.0	<ul style="list-style-type: none"><li>- Modified setting items of Emulation and Resolution. (Page 8)</li><li>- Added the Bluetooth to I/F. (Page 12)</li><li>- Added the "dot" to the unit of image size. (Page 13)</li></ul>
May 29, 2019	1.0.4.0	<ul style="list-style-type: none"><li>- Added the EPI2 to module drive configuration. (Page 5)</li><li>- Added the EPI2 to Emulation Selection. (Page 8)</li><li>- Added file name rules for EPI2 emulation. (Page 14)</li><li>- Added print command example for EPI2 emulation. (Page 18)</li></ul>
Nov 1, 2019	1.0.5.0	Increased the version number with the release of 1.0.5.0

# CONTENTS

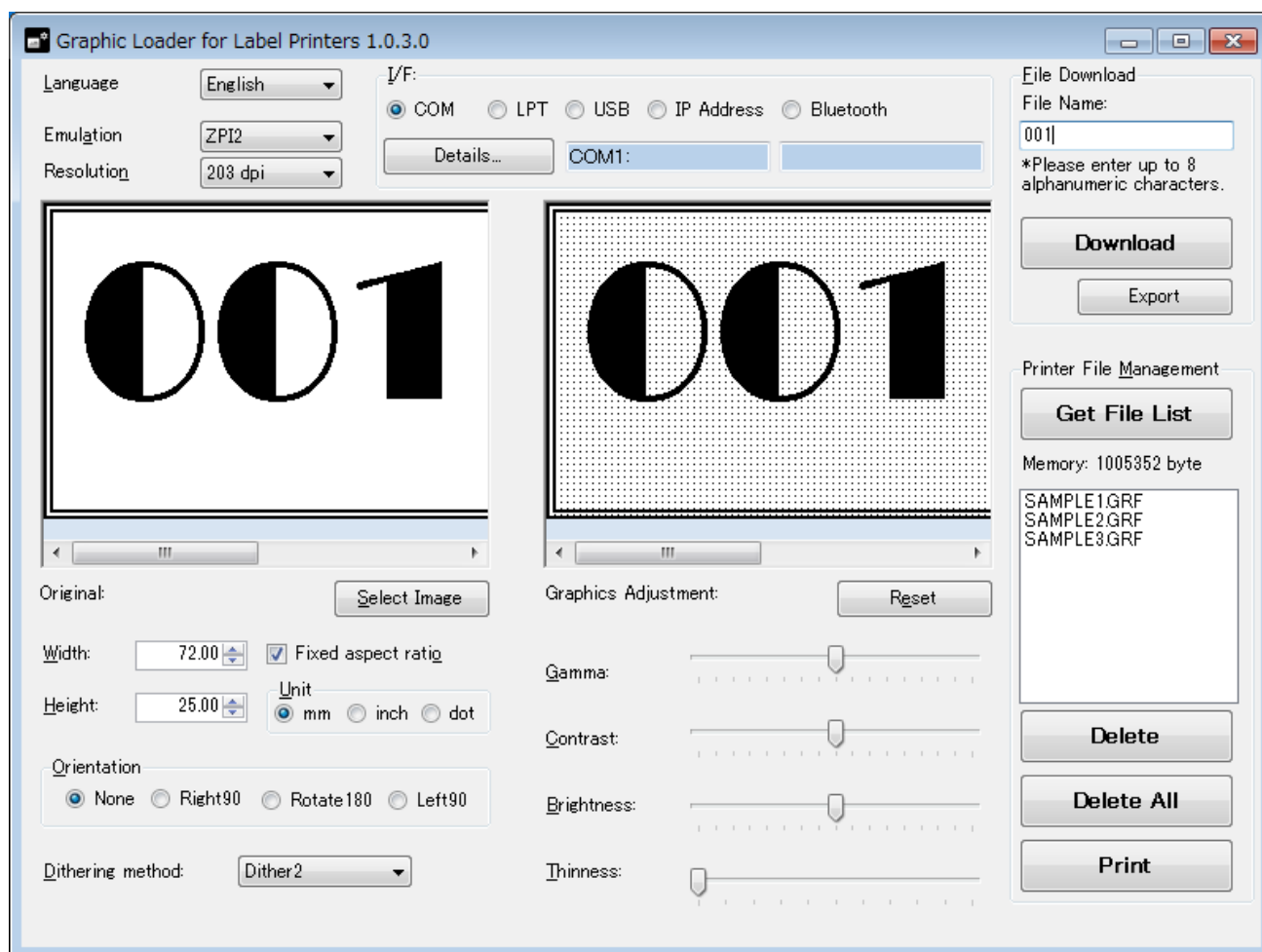
<b>1. Getting Started.....</b>	<b>5</b>
Utility Features Overview.....	5
System Requirements and Languages .....	6
Installing the Utility .....	7
Preparation.....	8
Interface setup details .....	9
<b>2. File downloading .....</b>	<b>13</b>
Basic usage.....	13
<b>3. Managing Printer Files.....</b>	<b>15</b>
Getting a list of downloaded files .....	15
Deleting downloaded files.....	16
Printing graphic files .....	17

# 1. Getting Started

## Utility Features Overview

This utility is to download graphic files into the flash memory of CITIZEN CL-S / CL-E printer series from a Windows computer. It also allows you to browse, delete and print downloaded graphic files.

\* The flash memory drive allocation is depending on the emulation. See the table below.

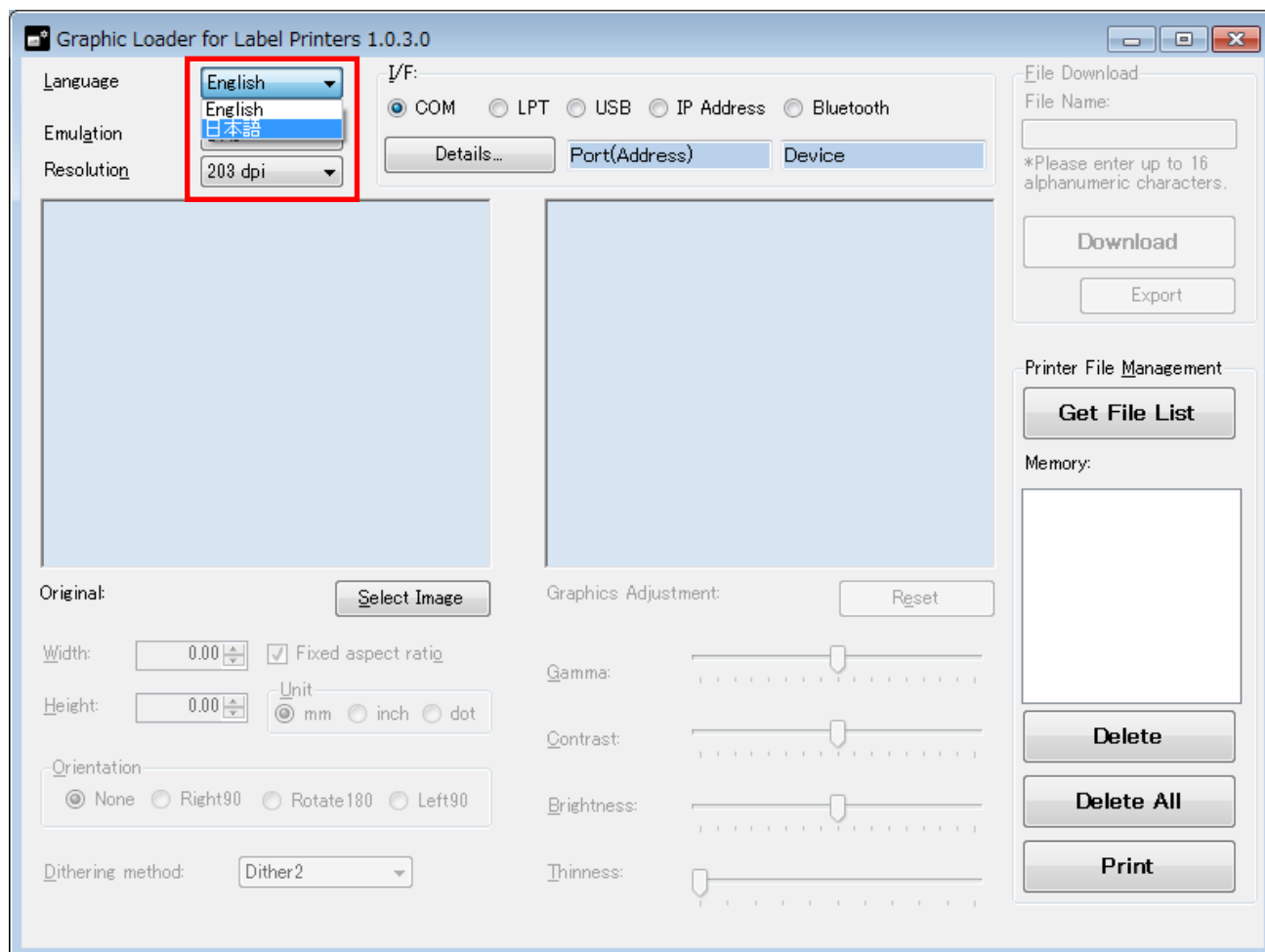


Module	RAM	Flash Memory
Emulation		
DMI	D	G
ZPI2	R	E
EPI2	-	-

## System Requirements and Languages

Windows 7 Professional SP1 or greater operating system required. This utility checks the current operation language and starts up either with Japanese or English. You can also change the language manually.

\* To switch languages, the application will need to restart.

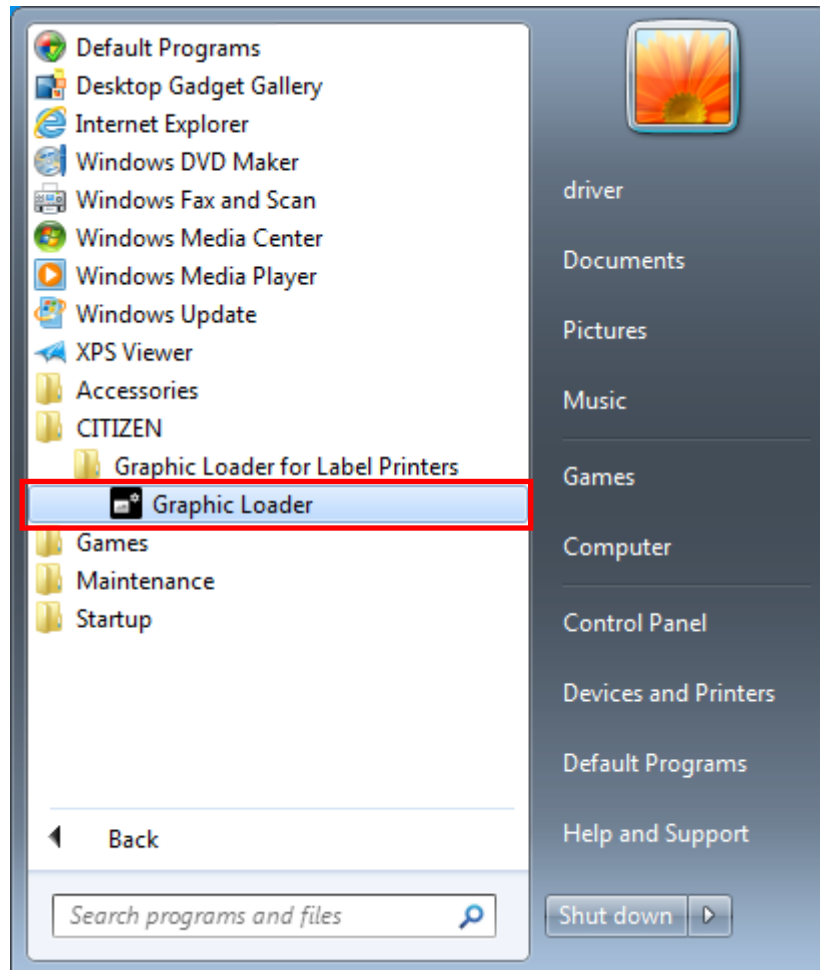


This utility was tested with,

- Windows 10 x64, x86
- Windows 8.1 x64
- Windows 7 Professional SP1 x86

## Installing the Utility

This utility is distributed in an installer. Start up the installer and follow the wizard. A shortcut will be created in the start menu after installing.



## Preparation

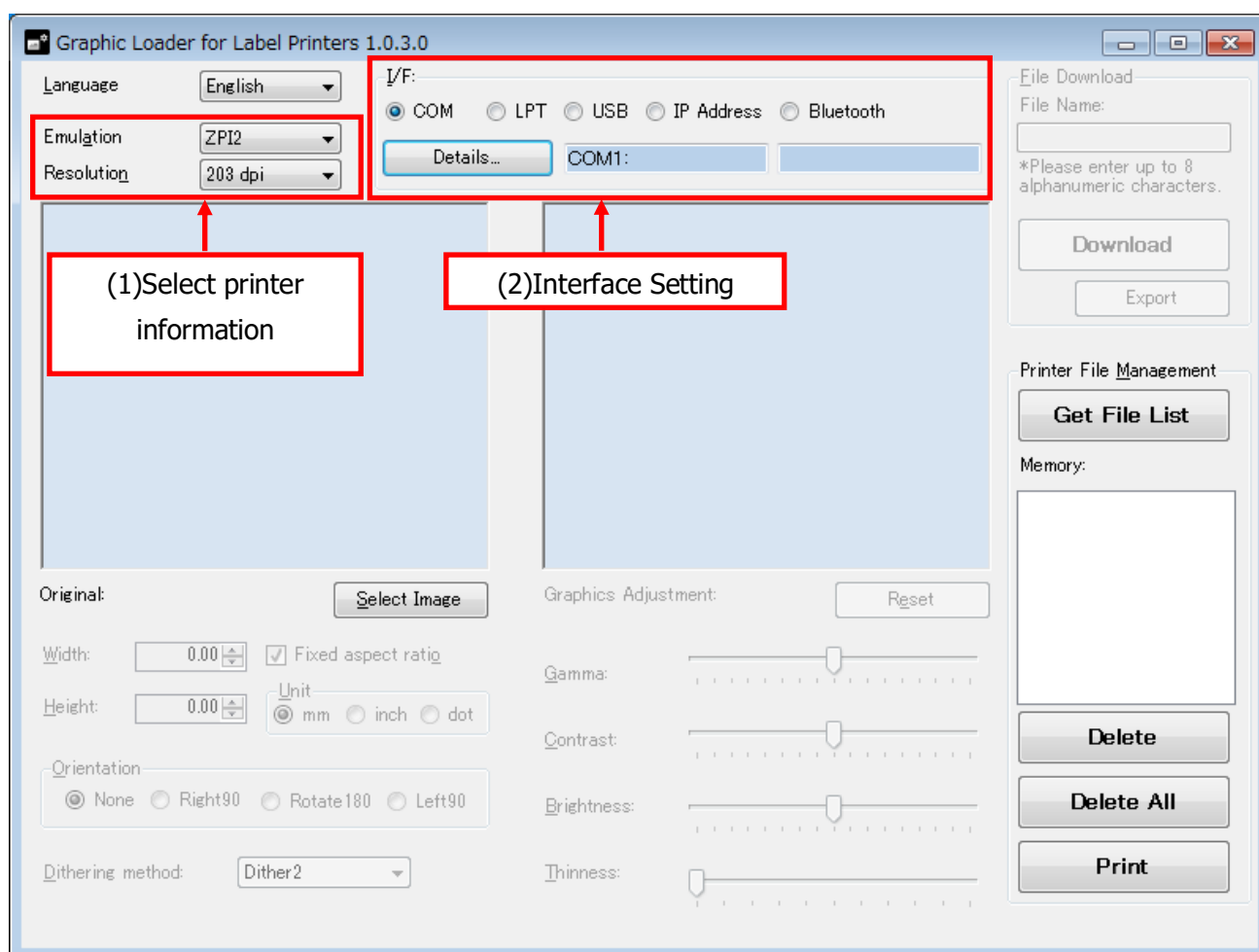
1) Select "Emulation", "Resolution" of the printer.

For "Emulation", you can select [DMI], [ZPI2] or [EPI2].

2) Select the interface which you are using with the printer, then set the connection setting from "Details...".

\* For details, refer to "Interface setup details."

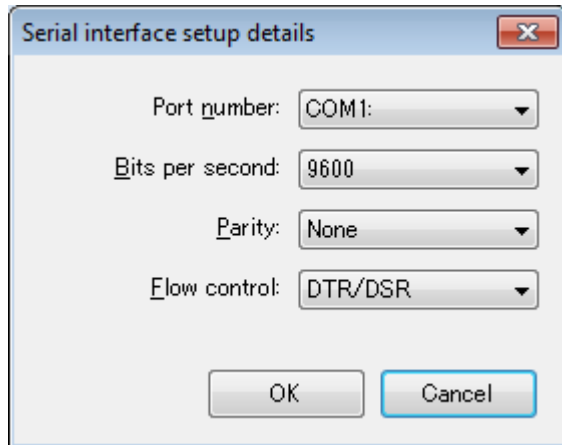
3) Then proceed to "2. File download" or "3. Printer File Management" depending on your purpose.



## Interface setup details

A dialog window pops up to configure interface connection details.

### ■Serial interface



Port number:

Select a port number.

Bits per second:

Select a baud rate from [2400] to [115200].

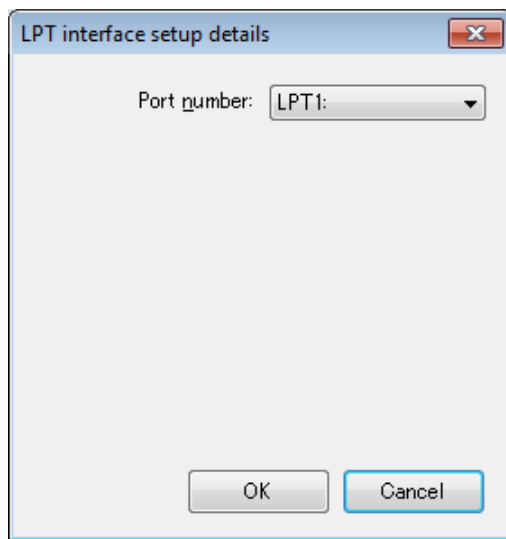
Parity:

Select a serial parity from [None], [Odd] or [Even].

Flow control:

Select a flow control from [DTR/DSR] or [Xon / Xoff].

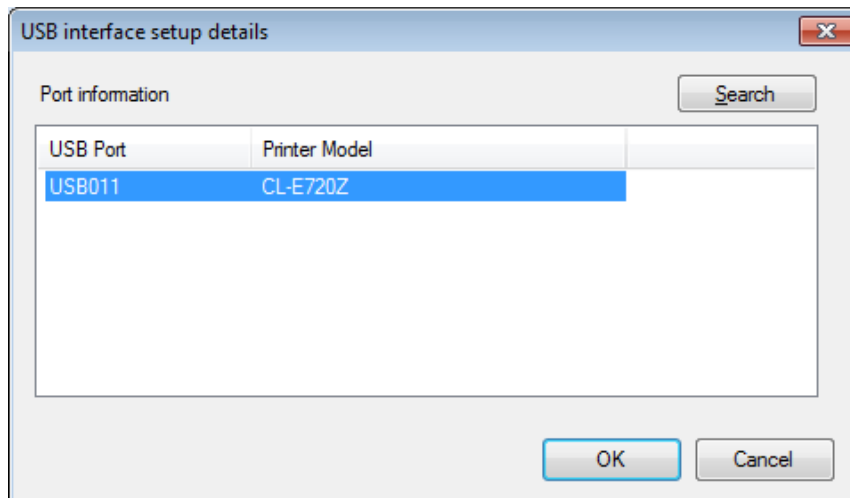
## ■Parallel interface



Port number:

Select a port number.

## ■USB interface



Port information:

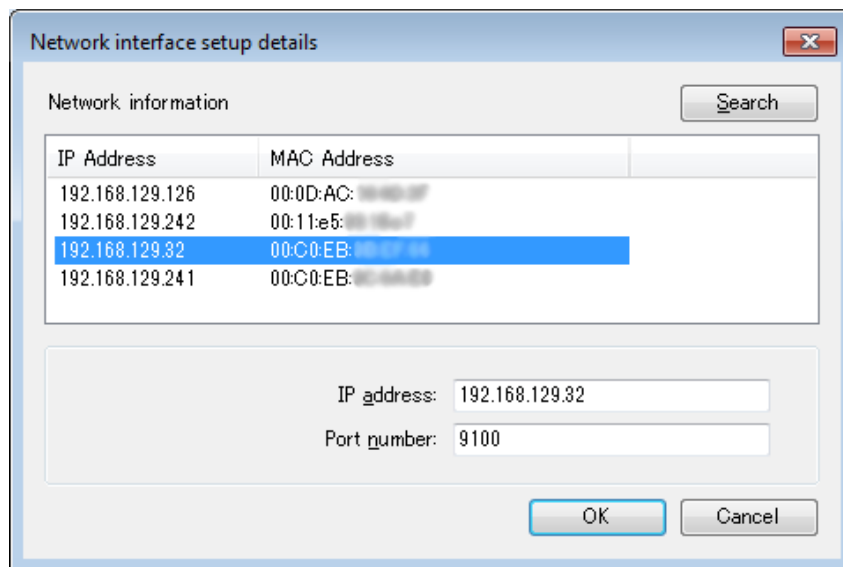
This shows a list of available USB ports.

Highlight one to select a port.

[Search] button:

Search and update the list of available USB ports.

## ■Network interface



### Network information:

This shows a list of available network addresses.

Highlight one to select a port.

### [Search] button:

Search and update the list of available network addresses.

### IP address:

An IP address will be inserted automatically by selecting a port from the list.

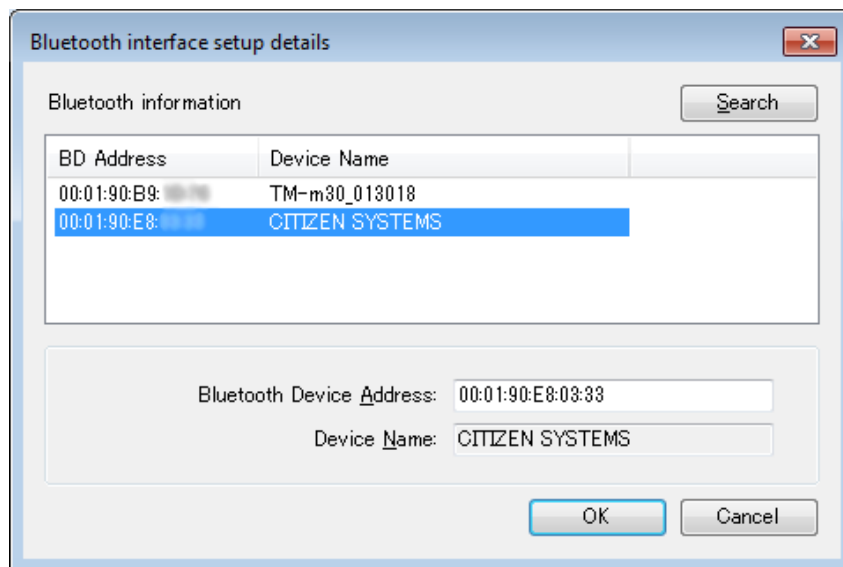
Type in an IP address only when you wish to set up a different address exceptionally.

### Port number:

9100 will be inserted automatically by default.

Type in a port number only when you wish to set up a different port number exceptionally.

## ■Bluetooth interface



### Bluetooth information:

This shows a list of available Bluetooth devices.

Highlight one to select a device.

### [Search] button:

Search and update the list of available Bluetooth devices.

### Bluetooth Device Address:

A Bluetooth address will be inserted automatically by selecting a device from the list.

Type in a Bluetooth address only when you wish to set up a different address exceptionally.

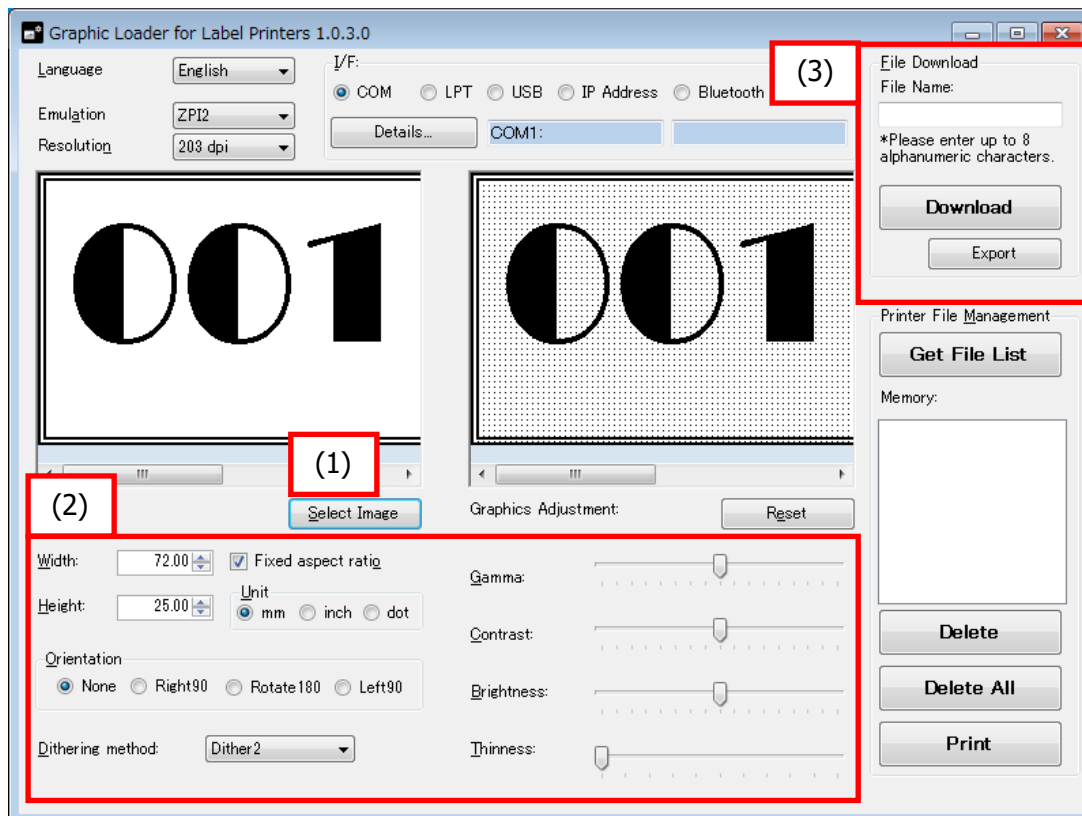
### Device Name:

Show the name of the device selected in the list.

## 2. File downloading

The File downloading feature is to download graphic files into the flash memory of the printers. Supported graphic file formats are BMP / GIF / EXIF / JPG / PNG / TIFF. You can also export an adjusted graphic file in BMP format.

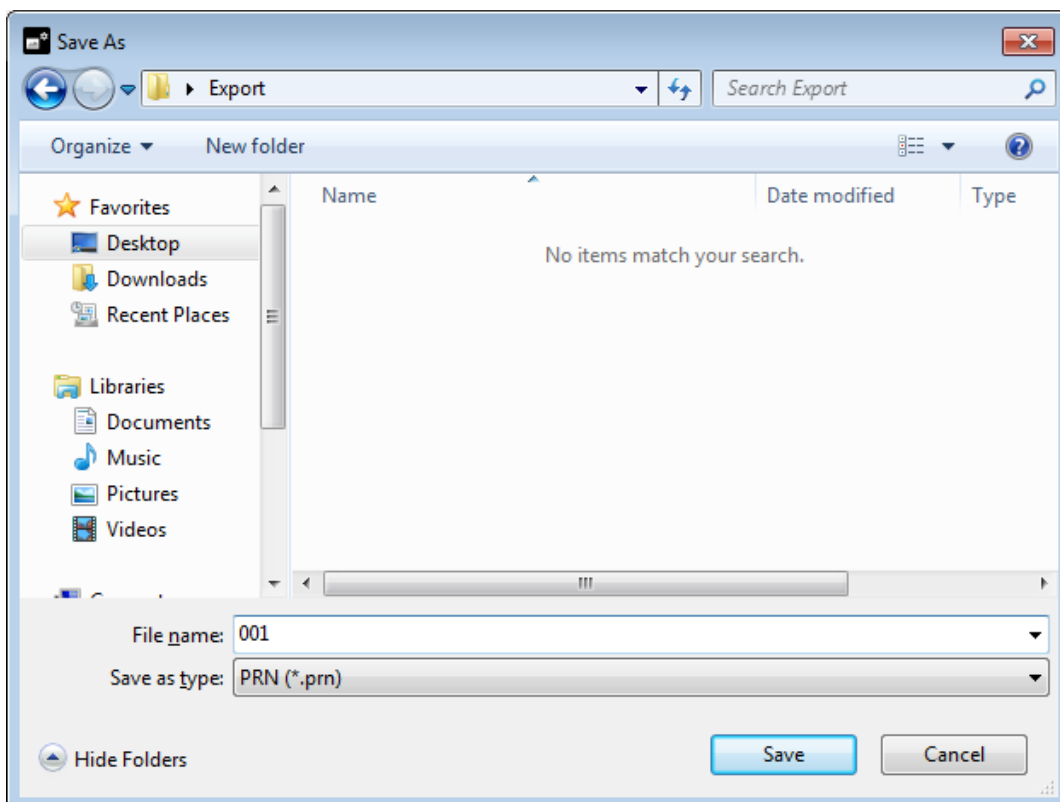
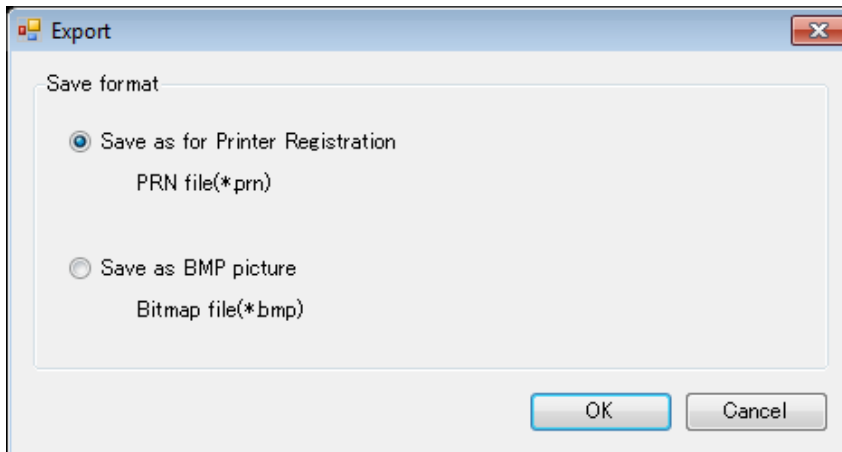
### Basic usage



- 1) Click "Select Image" to select a graphic file to download.
- 2) This area allows you to edit the image size or effects.
  - Specify the "width" or "height" of the image.
  - \* "Fixed aspect ratio" option keeps the aspect ratio.
  - \* Select a unit of image size either mm or inch or dot.
  - Select an orientation.
  - Select a dithering method.
  - Adjust "Gamma", "Contrast", "Brightness" or "Thinness (Thinning Black)" by using the slider.
  - "Reset" restores all settings to default.
- 3) "Download" starts downloading the graphic file into the printer with the specified file name. See the naming rule below.
  - \* In case of "DMI", up to 16 alphanumeric characters.

- \* In case of "ZPI2", up to 8 alphanumeric characters.
- \* In case of "EPI2", up to 8 alphanumeric characters.

With the export function, you can save the data of the corrected image to a file. When you click the "Export" button, the selection screen of the saving format is displayed, so select the saving format from "Printer registration format" and "BMP format". After selecting the save format, the "Save As" dialog will be displayed, so please specify the save location.

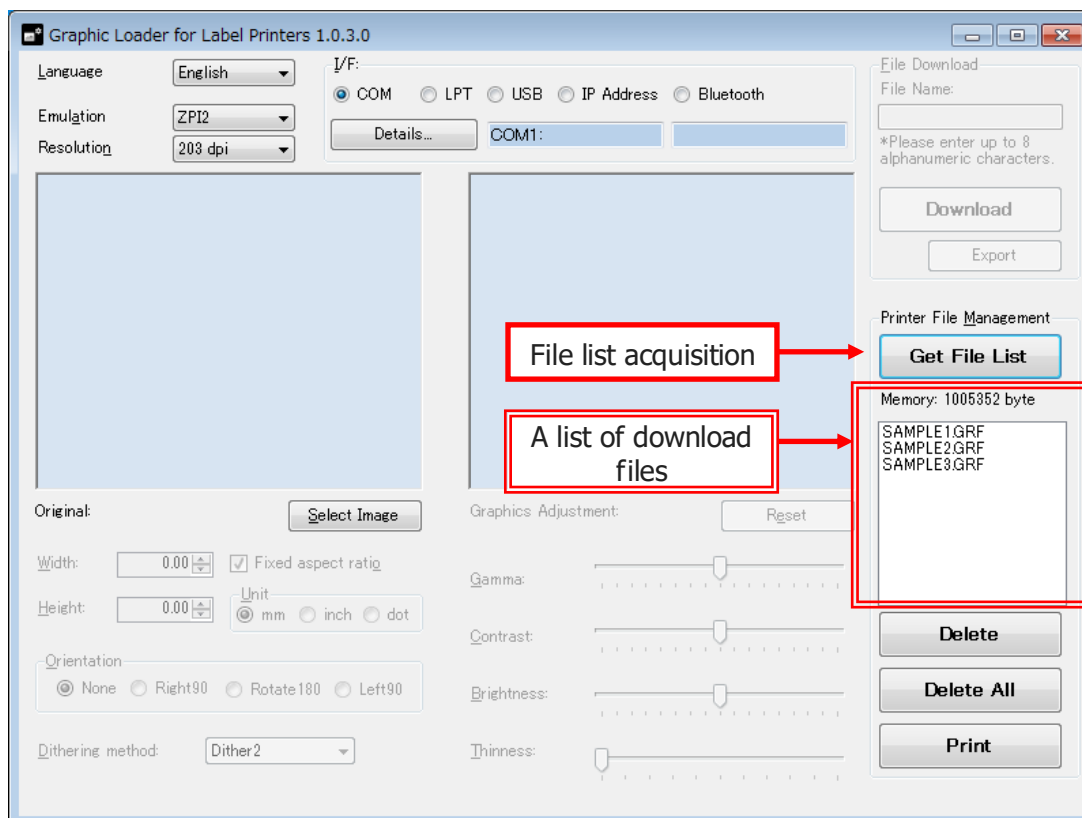


### 3. Managing Printer Files

This section allows you to retrieve a list of downloaded graphic files, print or delete the graphic files.

#### Getting a list of downloaded files

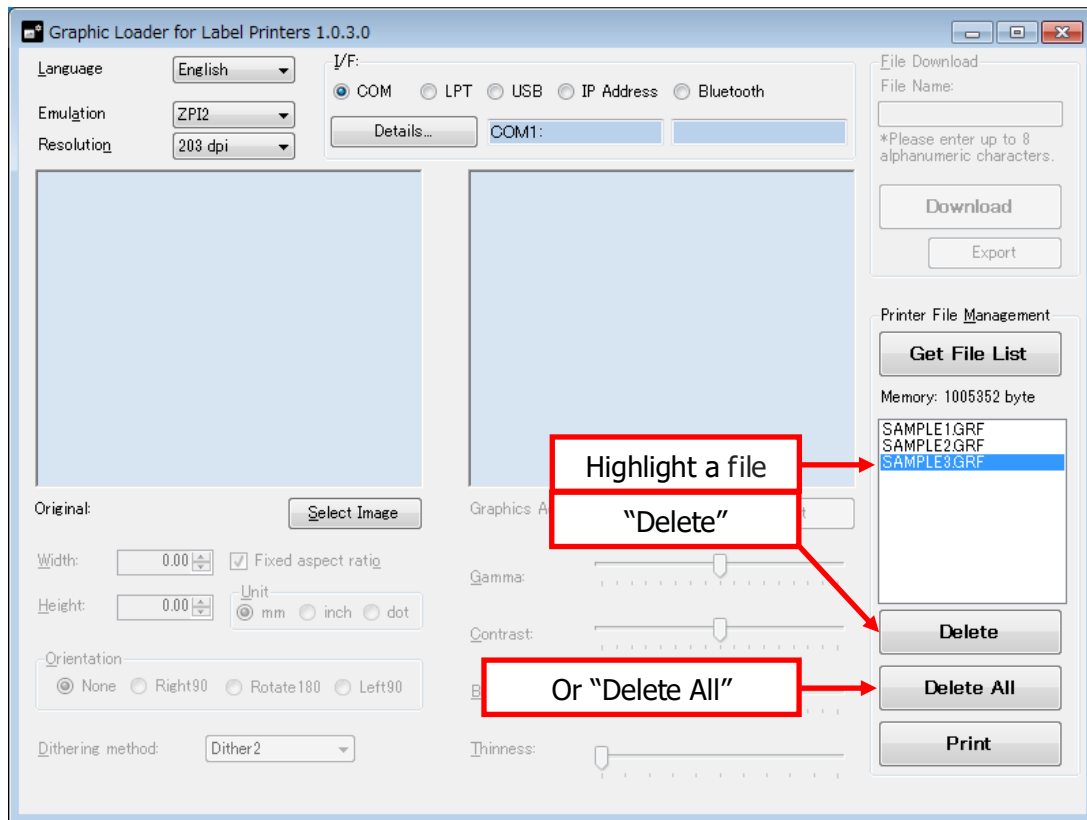
"Get File List" will acquire downloaded graphic file names, will show a list of file names and available memory size.



## Deleting downloaded files

You can delete downloaded graphic files individually or all at once, by selecting files from the list and "Delete" or by pressing "Delete All."

- \* The file list must be updated prior to deleting.
- \* Deleting multiple files may take time.



### 1) [Delete] button:

Deletes selected files in the list.

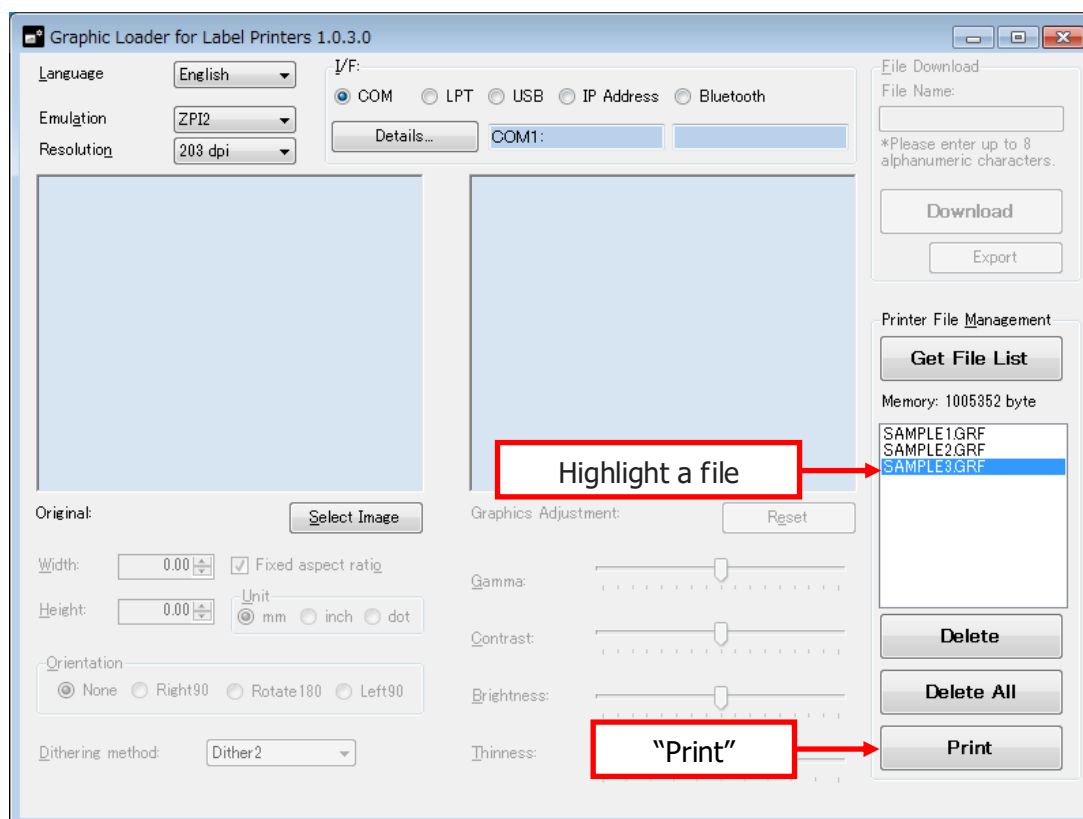
### 2) [Delete All] button:

Delete all graphic files in the file list. This won't be executed unless "Get File List" is performed or there is no file downloaded.

## Printing graphic files

"Print" button prints the graphic files downloaded in the printer. Highlight a file in the list and press "Print."

\* To print a file, the file list must be updated by "Get File List."



## Command examples to print downloaded graphic files

DMI emulation : An example command to print a file "Sample".

[02][1B]G0	Set the command set to "DMI / DMW"
[02]L	Starts the label format mode
D11	Sets the pixel size
1Y1100000000000Sample	Prints the downloaded graphic file "Sample"
Q0001	Sets the number of print
E	Ends the label format mode and prints

ZPI2 emulation : An example command to print a file "SAMPLE.GRF".

^XA	Starts the label format mode
^XGE:SAMPLE.GRF,1,1^FS	Prints the downloaded graphic file "SAMPLE.GRF"
^XZ	Ends the label format mode and prints

EPI2 emulation : An example command to print a file "Sample".

N	Clear the image buffer
GG0,0"Sample"	Prints the downloaded graphic file "Sample"
P1	Sets the number of print and prints

Windows Graphic Loader for Label Printers User's Manual

November 1, 2019 Version 1.0.5.0

CITIZEN SYSTEMS JAPAN CO., LTD.

<http://www.citizen-systems.co.jp/>